



Ravel[®]
Reliability at reach

FIRE ALARM & PAVA SOLUTIONS PRODUCT CATALOGUE

ASIA-PACIFIC REGION'S LARGEST
 FIRE ALARM MANUFACTURER.

INDIA'S FIRST AND ONLY 
FIRE ALARM MANUFACTURER.



ABOUT OUR COMPANY

Ravel Electronics Pvt. Ltd was established in 2003 and has grown to become a trusted name in the global fire and life safety industry and a market leader in Asia-Pacific's UL fire & PAVA mid-market space offering a comprehensive range of Intelligent addressable & conventional fire alarm systems, extinguishant control Panels and public address & voice alarm systems adhering strictly to stringent UL, FM and LPCB Standards. The factory is approved to stringent ISO 9001: 2015 Quality Management System standards.

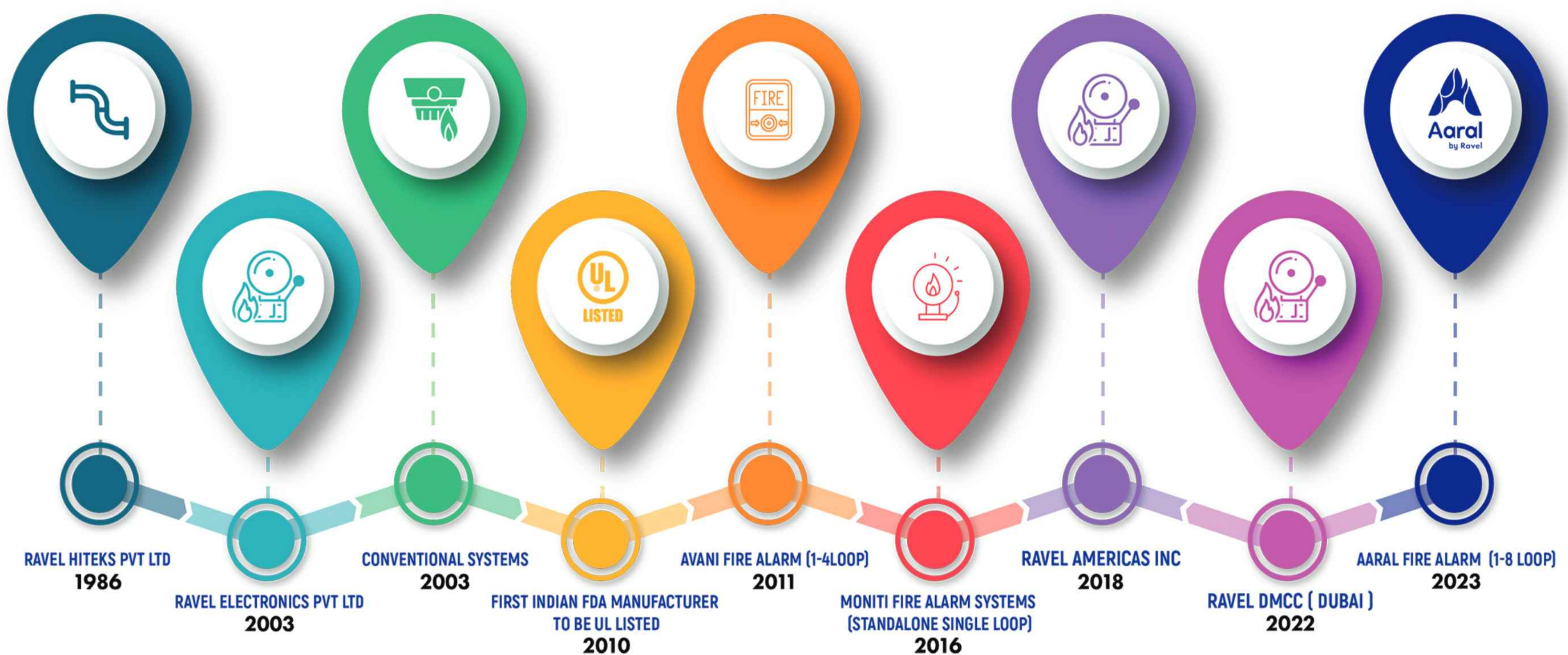
Ravel Electronics Pvt. Ltd is still the first and only Indian manufacturer and the second in Asia to obtain UL Certification for Fire alarm panels tailored to meet diverse needs and stringent safety standards

Ravel Electronics is headquartered in India with regional offices located in USA and UAE (Dubai) and employs over 400 people worldwide. Ravel has the world class 2 R&D centers employing highly skilled and experienced R&D engineers developing innovative futuristic solutions & products to cater to needs of the customers and market.

The company has a manufacturing capacity of over 60,000 panels and 5,00,000 detectors per annum covering microprocessor based intelligent addressable, conventional, gas release/extinguishing and PAVA systems- along with devices and accessories from a 100,000 square foot facility in Chennai, India

Ravel caters to more than 1 Million satisfied clients spread across 32 countries through 100+ distributors around the globe.

MILESTONE



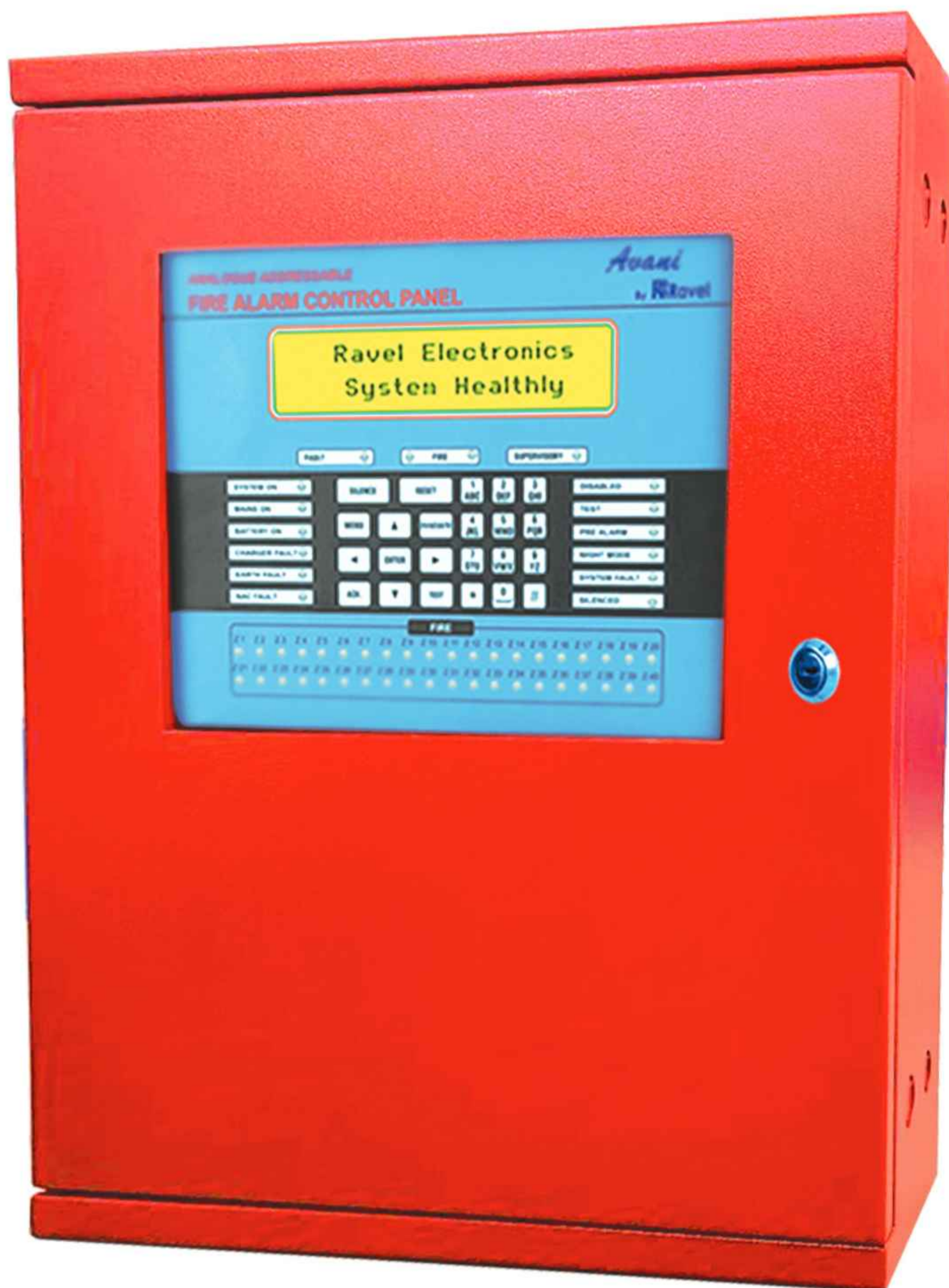
01	Avani – Analogue Addressable System	03
02	Avani – Modules and Accessories	04
03	CMS Web Browser	06
04	Conventional System	08
05	Special Detectors	11
06	Agent Release System	13
07	Public Address & Voice Evacuation System	15
08	Ravel project references in Middle East & Africa region	25

Ravel offers a comprehensive range of analog addressable & conventional fire alarm systems, agent release panels and public address & voice alarm systems with solutions focused on addressing the needs of the growing mid-market & commercial sector.

Avani is an analogue addressable fire alarm control panel with UL listing that are compact, cost effective with an extensive list of powerful features that is simple to install and commission catering to small to mid-sized buildings.

AVANI

4 Loop Fire Alarm Control Panel



- UL Listed (9th edition)
- Support 1-4 loops and networkable upto 8 panels.
- Each loop supports 254 devices in any combination of detectors/modules.
- Maximum 16 panels can be monitored & controlled through GUI.
- Supports 8128 devices on a single peer to peer network.
- Large 160-character LCD display (4 X 40), Touch Keypad.
- Degraded Mode facility (In case of CPU fail the loop card work as a conventional FAS).
- 2000 Event Storage with Real Time Clock.
- Upto 192 grouping facility.
- USB 2.0 Interface for PC connectivity (field Programmable).
- RS 485 Communication facility for Network / Repeater.
- Programmable Auto Silence Facility, Programmable Silence Inhibit.
- 2 programmable Inputs for Evacuate, Remote Fire Conventional Zone, Silence.
- 3 programmable Form C relay for Fire, Fault and Supervisory.
- 2 nos of Supervised Notification Appliance Circuits.
- Easy to commission, simple & powerful programming and easy to maintain.
- Perfect for small to mid-sized buildings.
- Dimensions : Avani (400W x 500H x120D) mm
- IP Rating: IP52.

AVANI RP

Addressable Passive Repeater

- UL listed (9th Edition).
- Touch Keypad.
- 160 (40X4) character LCD Display.
- User selectable display parameters.
- 2000 Event with Real Time Clock.
- RS 485 communication for Network.
- Common fire, supervisory, fault LED indication.
- IP Rating: IP52.



UL268 7th EDITION

Addressable Detectors

- Complies UL 268 7th edition.
- Built-in short circuit isolator and dual LEDs for 360° visibility.
- 3 models covering Addressable optical smoke, heat & multi-criteria (smoke and heat) available.
- Ideal for both fast-flaming and slow smoldering fires.
- Advanced algorithms provide analogue detection discrimination.
- High immunity against unwanted alarms.
- Stable smoke sensing chamber. No adjustment or replacement required.
- Sleek low-profile housing design.
- Fixed temperature & Rate-of-Rise (ROR) detector available.
- Optional remote LED output.
- Easy installation with simple address setting DIP switches.
- Dual photoelectric smoke and heat sensors to detect either smoke, heat or a combination of the phenomena.
- IP Rating: IP42.



RE-428DU-S

Addressable Duct detector

- High efficient single sampling tube (Aluminium).
- Venture tube available in 2 Feet length.
- Dual LED's for 360° View.
- ABS Plastic housing Response indicator .
- Less maintenance, Test Hole on front cover.
- Easy dip switch addressing.
- Different alarm sensitivity levels.
- IP Rating: IP54.

RE-314BI

Isolator Base

- An isolator base is designed to protect the panel from wire-to-wire short circuits.
- Powered by SLC directly.
- Steady LED for short circuit identification.
- Auto resetting to normal condition once the short circuit rectified.
- Yellow LED indication on the side of the base for short circuit Identification.



RE-756P SERIES

Addressable ABS Plastic pull station

- Complies UL 38 8th edition.
- DIP Switches for addressing.
- Address ranges from 1 to 254.
- Inbuilt isolator.
- SLC communication with the panel.
- Lift and push.
- Status indicator.
- Key lock access.
- Low Standby Current.
- IP Rating: IP40.



RE-717PD

Addressable Manual Pull Station

- UL Listed 8th Edition.
- Addressable Dual Action pull station.
- High-Quality Non-Toxic Die casting.
- Lift and Pull, Break glass Rod.
- Corrosion inhibited surfaces.
- Single Gang Mounting.
- 10 A, 120VAC snap action switch (S.P.S.T.).
- Enclosure Complies IP 40 as per IEC standard 60529.
- Inbuilt isolator.
- IP Rating: IP40.

RE-717 SERIES

Addressable Modules

- Complies UL 864 9th edition.
- Type "A" Indoor Use.
- Resettable by an element kit.
- Suitable for flush or surface mounting with MS back box.
- Module Addressing by 8-way DIP Switches.
- IP Rating: IP50.



⊙ RE-717MM - monitor module.

⊙ RE-717MC - control module.

⊙ RE-717MX - input/ output module.

⊙ RE-717MR - relay module.

⊙ RE-717MZ - zone interface module.

⊙ RE-717MI - fault isolator module.

RE-380HR/FR

Addressable Beam Detector

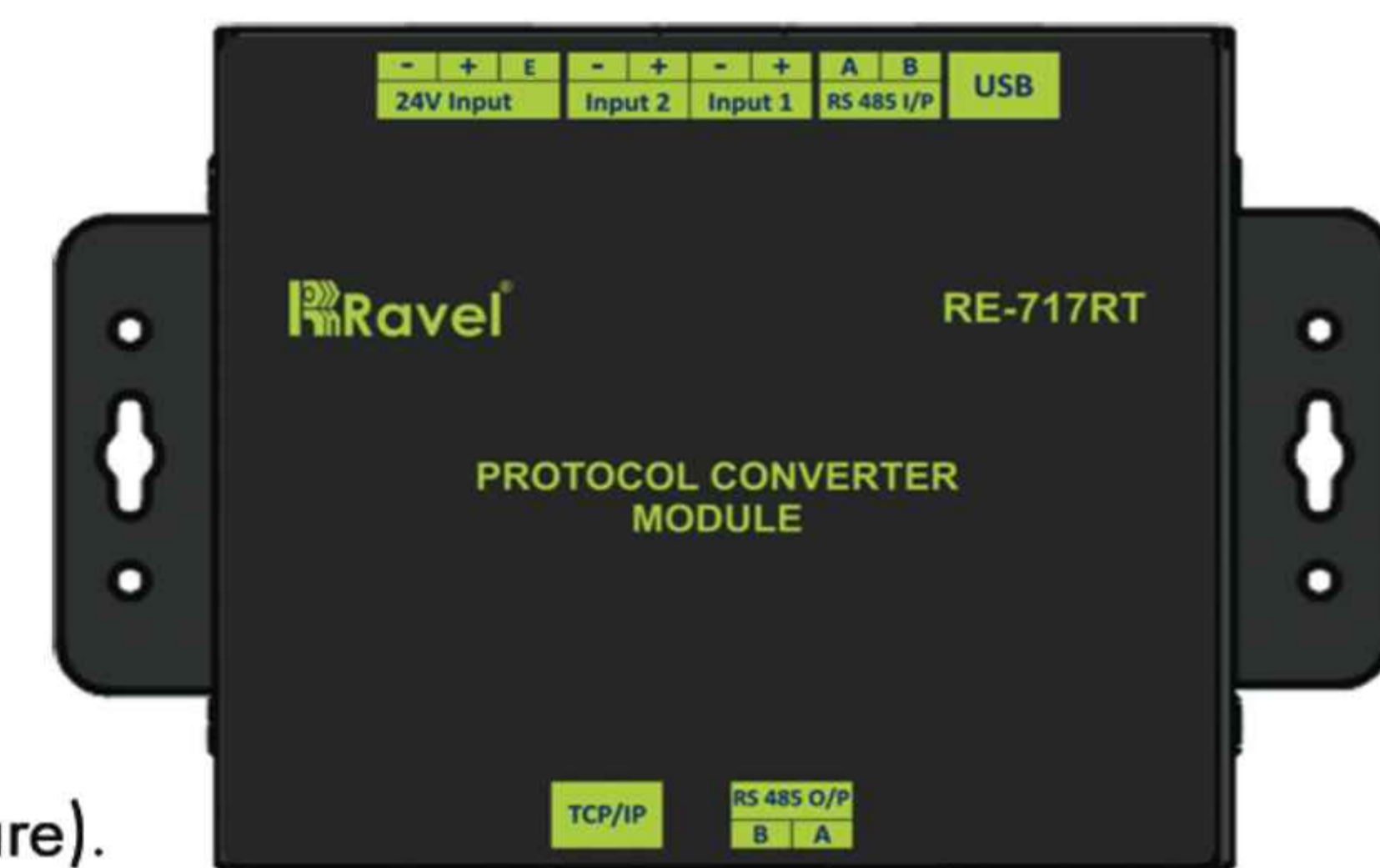


- Address range 1 -254, compatible with Avani.
- User Friendly Installation.
- In built laser light for easy alignment.
- Supports 5-to-100-meter range.
- Adjusting Screws at detector for precise alignment.
- Infrared transmitter & receiver located in a single housing.
- In built drift compensation for monitoring dirt build up on the optical system.
- Configurable Sensitivity Threshold 18% ,30%, 50%.
- Maintenance free, effective sensing beam detectors.
- Available in 50 & 100 meter variants.
- IP Rating: IP50.

RE-717RT

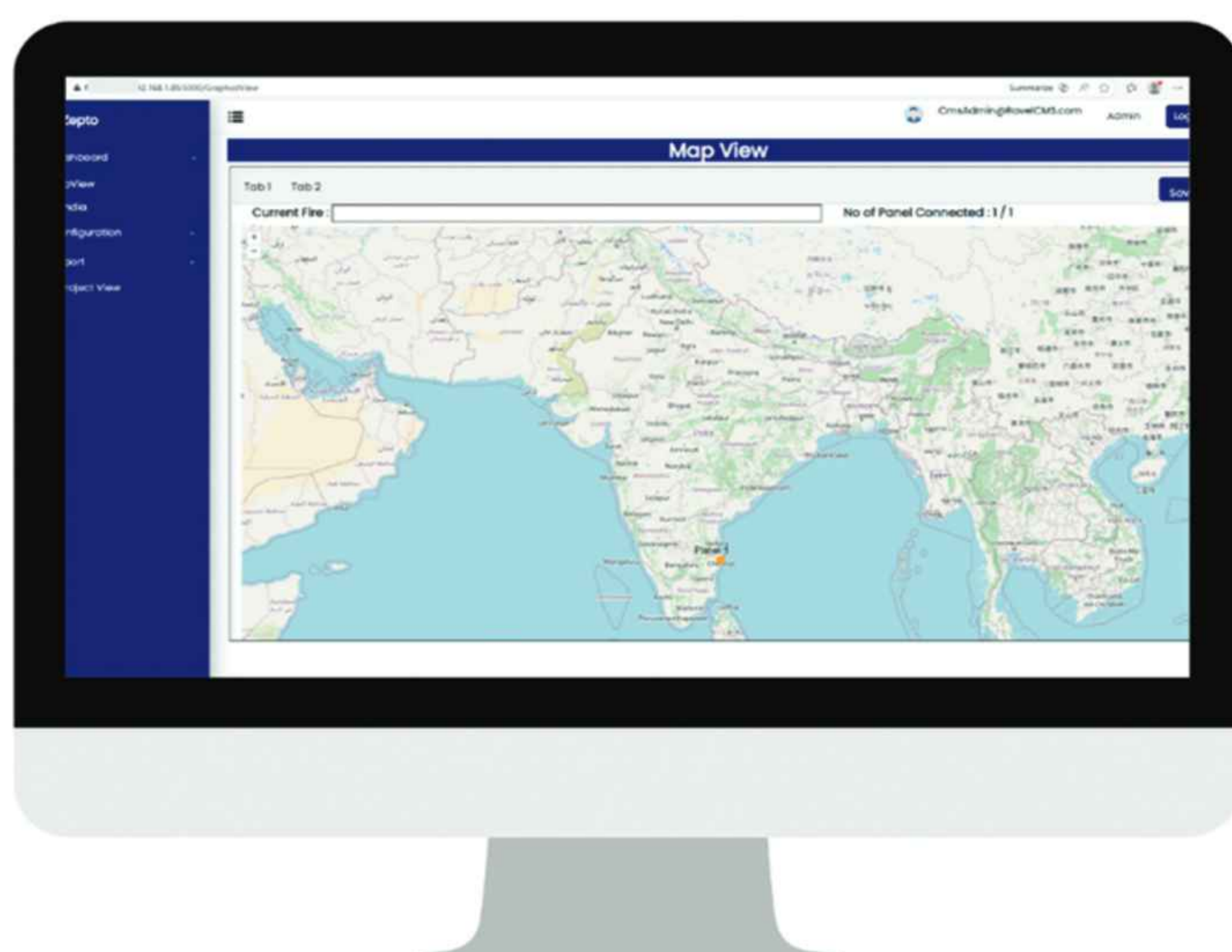
TCP/IP or MODBUS Converter

- Give full details of inputs and outputs of FACP.
- LED for indicating power and transceiver status.
- The protocol converter has 3 Inputs USB, RS485, Contact Inputs.
- Configurable 2 Output mode RS485 Modbus and TCP/IP (Modbus / PC Software).
- 10/100M auto sensing Ethernet mini card for embedded device networking.
- TCP Server modes.
- Low power consumption.
- IP Rating: IP50.



CMS WEB BROWSER

Ravel CMS

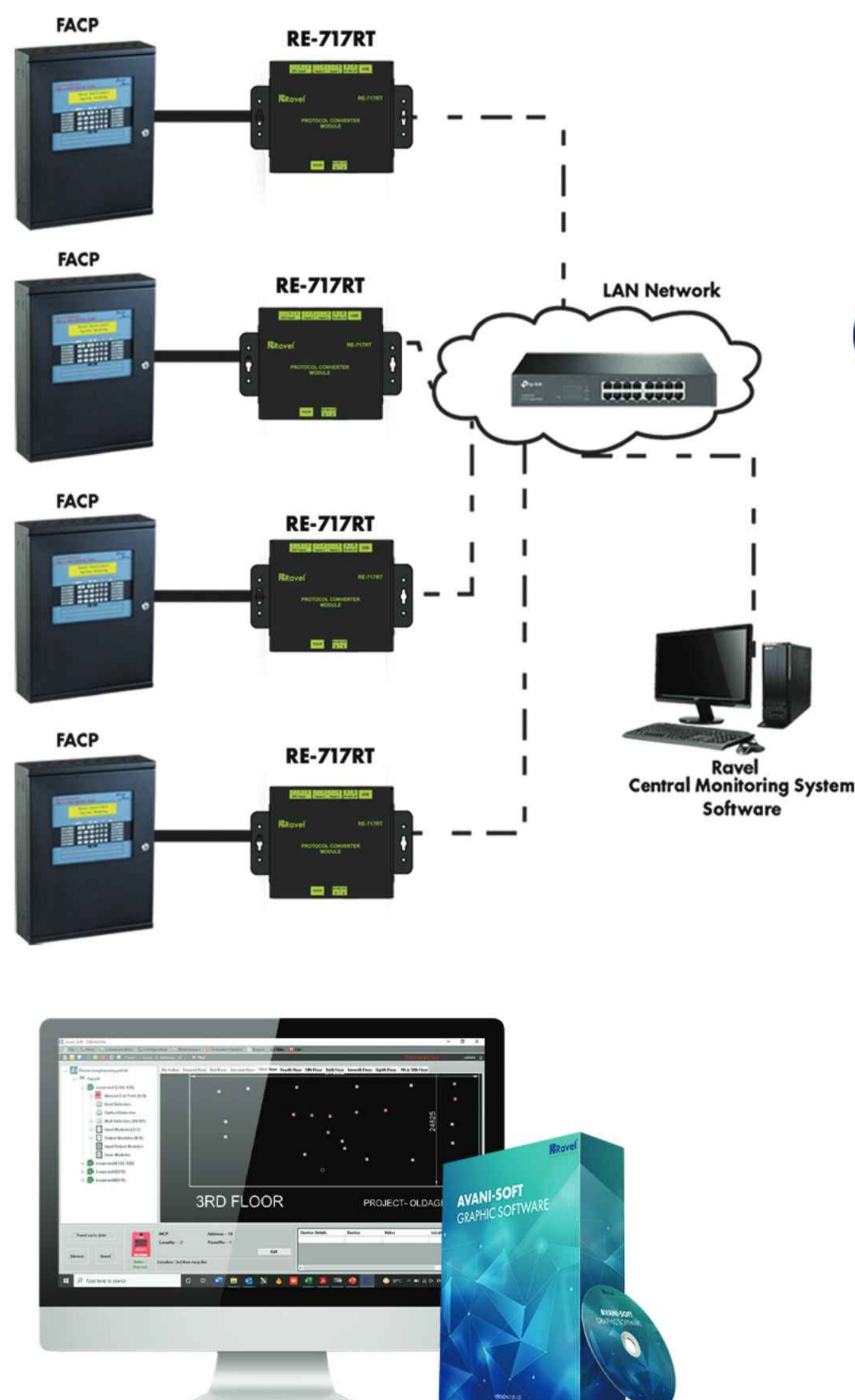


- User friendly Web based software.
- Up to 20,000 nodes.
- Allows full client-server facility.
- Facility to monitor and control the fire alarm control panels from a single window.
- Unambiguous visual alerts for fire and Fault conditions.
- No. of Alarm & Fault details represented in graph.
- Event log with configurable report facility (Export).
- Remote Monitoring facility.
- Alarms shall be viewed on client machines.
- Panels are Visible and accessible through the Map View interface.

RE-PS5

NAC Extender / Power Supply

- Listed to UL 864 10th edition.
- Operates on 110 – 230 VAC 50/60HZ .
- System ON, Mains and standby status indication.
- Standby battery backup with built in charging.
- One remote alarm input.
- One Form-C Common fault relay.
- One NAC Follower Input.
- 2 No's of 24VDC output with short circuit protection.
- 2 No's of NAC output with short circuit protection.
- AC Loss Delay facility.
- Auto Silence facility.
- Trouble Reminder facility.
- All field wiring is power limited and supervised except battery and AC Input.
- Inbuilt Keys for Acknowledge & Restart.
- Ground fault detection facility @ 0 Ohms.
- Inbuilt RS 485 Bus communication.
- Addressing by 8-way DIP switch.
- System(field) Configurations using 8-way DIP switch.
- IP Rating: IP50.



AVANI SOFT

Graphic Software

- User friendly with windows-based software.
- Three Level Multiuser Access.
- Multi Mode (Ethernet / USB) Communication Facility.
- Facility to monitor and control the fire alarm control panels from a single window.
- Unambiguous Visual & Audible alerts for fire and fault conditions.
- Pop up for any events like fire, fault, power fault, etc.
- Event Fetch from fire alarm control panel facility.
- Single / Multi Mode Floor Configuration facility.
- Floor Configuration using DWG / DXF Files.
- Avani soft- Maximum 16 AVANI addressable panel.
- Maximum of 16 AVANI addressable fire alarm control panels shall be monitored and controlled through the software.

RE-102/ 104

Conventional Panel

- 2 /4 zones conventional Fire alarm panel.
- 16 X 2 Dot Matrix LCD Display.
- Standby battery backup with built in charging.
- Switch Mode Power Supply.
- Low Battery visual warning with audible tone.
- Relay Output for Actuators, for fire and fault.
- All zones accept smoke detectors and any normally open contact device.
- Zone wise isolation and one man walk test facility.
- Zone wise sounder / contact (optional).
- CE Approved.
- Color Option: White / Red.
- IP Rating: IP50.



RE-2554 | 2558

4/8 IDC's Control Panel

- Complies UL864 (9th Edition).
- 16x2 Dot Matrix LCD display.
- 4/8 Class B Style 'B' or Style 'C' Initiating Device Circuit (IDC).
- 2 Class B Notification Appliance Circuits (NAC).
- NAC shall be programmed as silenceable or non-silenceable.
- Form C relays for fire, fault and supervisory.
- Zone isolation facility with loop voltage cut off.
- Standby (battery) backup 24VDC power supply with built in charger.
- Programmable trouble reminder facility.
- Color Option: White / Red.
- IP Rating: IP50.

RE -900 SERIES

12- 128 IDC's Control Panel

- Zones available: 12, 16, 20, 24, 32, 48, 64,96 and 128.
- Facility to connect Public Address System (PA) through RS-485 Communication.
- Peer to Peer network facility.
- 20 x 4 dot matrix LCD display.
- Touch keypad for user friendly operation.
- Class- B, Style B / C Initiating Device Circuit (IDC).
- Class B Notification Appliance Circuits (NAC).
- 1000 Event storage with RTC.
- RS 485 Communication facility.
- TCP/IP facility (Optional).
- MODBUS for Building Management System integration (Optional).
- PC software (optional).
- Maximum 16 panels can be connected to a single network.
- CE Approved and NFPA -72 Standard.
- IP Rating: IP50.



RE-316 SERIES

Conventional Detectors

- UL listed.
- 3 models covering optical smoke, heat & multi-criteria (smoke and heat) available.
- Dual LED's for 360° visibility.
- Polarity free wiring.
- Advanced detection technique.
- Easy to install.
- Sleek low-profile housing design, White Color (RAL 9016).
- Regular 100mm base.
- IP Rating: IP42.



RE-326 SERIES

Conventional Detectors

- CE Approved, EN-54 Standard.
- Dual LED's for 360° visibility.
- Advanced detection and communication protocol.
- Easy installation and maintenance.
- Sleek low-profile housing design, White Color (RAL 9016).
- Regular 100mm Base.
- IP Rating: IP42.

RE-25SS

Conventional Sounder Strobe

- Ceiling/Flush Mount.
- ABS plastic material.
- Low current consumption device.
- Complies NFPA 72 standard.
- 3 type of field configurable tone settings.
- 100 ± 10 dB (@ 1m) distance.
- 24VDC Operating Voltage.
- IP Rating: IP40.





RE-616 SERIES

Conventional sounder, sounder strobe

- Flash duration 20 ms.
- 7 Different tone selection by using DIP 6-way DIP switch.
- Candela Low and High can be selected using DIP switch.
- Sounder and strobe OFF facility.
- Tone High and Low possible using DIP switch.
- Low Alarm Current, Sound Level 85dB@3meter.
- The low frequency 520 Hz signal is unique, and is ideal for hotels and other sleeping occupancies.
- IP Rating: IP60.

RE-716M SERIES

Manual Call Point

- Operates on 24 VDC.
- Resettable by a key.
- Single or Dual action.
- Alarm Status is indicated by RED colour LED.
- Green Coloured for Emergency Release.
- Yellow Coloured for Abort.
- 1 No's of NO & NC Output.
- IP Rating: IP40.



RE-736B

Conventional Alarm Bell

- LPCB Approved.
- High efficiency low current consumption on 24VDC motorized bells.
- Terminals will accept 2.5mm cables.
- Simple installation via multi-fixing base plate for all types of location.
- Fitted with two series diodes for fault monitoring.
- Fully suppressed and there is no interference with other equipment.
- IP Rating: IP21.

RE-2APS & RE-5APS

Power Supply

- Operates on 120 - 220 VAC, 60 / 50 Hz +10%, -15% .
- Battery backup with built in charging.
- Low battery visual warning with audible tone.
- DC Output indication.
- Lock and key for authorized access.
- Replaceable Fuse for DC output.
- Auto resettable fuses are provided for AC and battery.
- IP Rating: IP50.





RE-386CO

CO (Carbon monoxide) Detector

- Advanced algorithms provide advanced detection, discrimination.
- Stable gas sensing chamber (No adjustment or replacement required).
- High immunity against unwanted alarms.
- 4-wire system operation.
- Detector auto-reset once gas levels fall below alarm threshold levels.
- N/O alarm relay output.
- Connects to Zone Module for use with addressable control and indicating equipment.
- Sleek low-profile housing design.
- Low maintenance.
- IP Rating: IP42.

RE-386NG

NG (Natural Gas) Detector

- Advanced algorithms provide advanced detection, discrimination.
- Stable gas sensing chamber (No adjustment or replacement required).
- High immunity against unwanted alarms.
- 4-wire system operation.
- Detector auto-reset once gas levels fall below alarm threshold levels.
- N/O alarm relay output.
- Easy installation. No programming required.
- Connects to zone monitor for use with addressable control and indicating equipment.
- Sleek low-profile housing design.
- Low maintenance.
- IP Rating: IP42.



RE-386LPG

LPG (Liquid Petroleum Gas) Detector

- Advanced algorithms provide advanced detection, discrimination.
- Stable gas sensing chamber. No adjustment or replacement required.
- High immunity against unwanted alarms.
- 4-wire system operation.
- Detector auto-reset once gas levels fall below alarm threshold levels.
- Internal reed switch for hush and test functions.
- DC 24 V operation.
- N/O alarm relay output.
- 70 dB internal sounder.
- Connects to zone monitor for use with addressable control and indicating equipment.
- Sleek low-profile housing design.
- Low maintenance.
- IP Rating: IP42.



RE-428DU-C

Conventional Duct Detector

- Highly efficient single sampling tube.
- Easy to install.
- One-pipe air sampling system.
- Sampling tube available in 2 Feet length.
- Patented venturi pipe and duct housing.
- Test hole on cover.
- Simple installation, Simple service and maintenance.
- Device addressing via 8 way DIP switch.
- IP Rating: IP54.

RE-428FR/HR

Optical Beam Detector

- LPCB approved.
- User Friendly Installation.
- In built laser light for easy alignment.
- Supports 50 & 100 meter range.
- Option for Remote Indication.
- Adjusting Screws at detector for precise alignment.
- Infrared transmitter & receiver located in a single housing.
- In built drift compensation for monitoring dirt build up on the optical system.
- Sensitivity Threshold :- 18% ,30%, 50%.
- IP Rating: IP50.



RE-120GR

Agent Release Panel



- 2 Zone with 1 Class B RAC (Programmable Releasing Agent Circuits) output.
- 16 X 2 LCD Dot Matrix Display.
- Two mode operation facility (Auto / Manual).
- Programmable Solenoid Output with ON and OFF Timer.
- Programmable Main / Standby Cylinder output Facility.
- Gas Inhibit and Instant release facility.
- Manual Gas Release with or without timer.
- Actuator pressure low sensing facility.
- 50 Events Log with RTC for Fire & Gas Release.
- RS 485 Output for Repeater.
- Compatible to all types of conventional detectors.
- Zone Disable (Isolation) facility with loop voltage cut off.
- Resettable 24 VDC output for 4 wire detectors.
- Evacuate and Keypad Enable, Disable Facility.
- Color: White / Red.
- IP Rating: IP50.

RE-500P SERIES

Plastic Pull Station

- Complies UL 38 8th edition.
- Lift and push.
- Status indicator.
- Key lock access.
- Available colours Red, Green and Yellow for different application.
- IP Rating: IP40.



RE-716 PIT SERIES

Manual Pull Station

- UL Listed.
- Single / Dual action lift and pull.
- Release/abort written on top for easy visibility with color code.
- Break glass Rod.
- All stations offer hex screw or key lock access.
- Available colours Red, Green and Yellow for different application.
- IP Rating: IP40.

RE-25AR

Agent Release Panel

- UL Listed (9th Edition).
- 4 Zone with 2 Class B RAC (Programmable Releasing Agent Circuits) output.
- 16x2 Dot Matrix LCD display.
- 2 Class B Notification Appliance Circuits (NAC).
- 4 Programmable Inputs for abort, release, Pressure switch.
- 3 Form C programmable relays for fire / fault / supervisory / Gas Released.
- Two modes of operations Auto / Manual.
- Programmable 24V DC Outputs.
- RS 485 Communication facility (Optional).
- 198 Events history log with RTC.
- Programmable RAC's with count down timer.
- Programmable AC loss delay.
- Programmable trouble reminder.
- IP Rating: IP50.



CYLINDER



RE-716P1T LP (Y)



RE-716P1T LP (G)

RE-2AS

Public Address Voice Evacuation

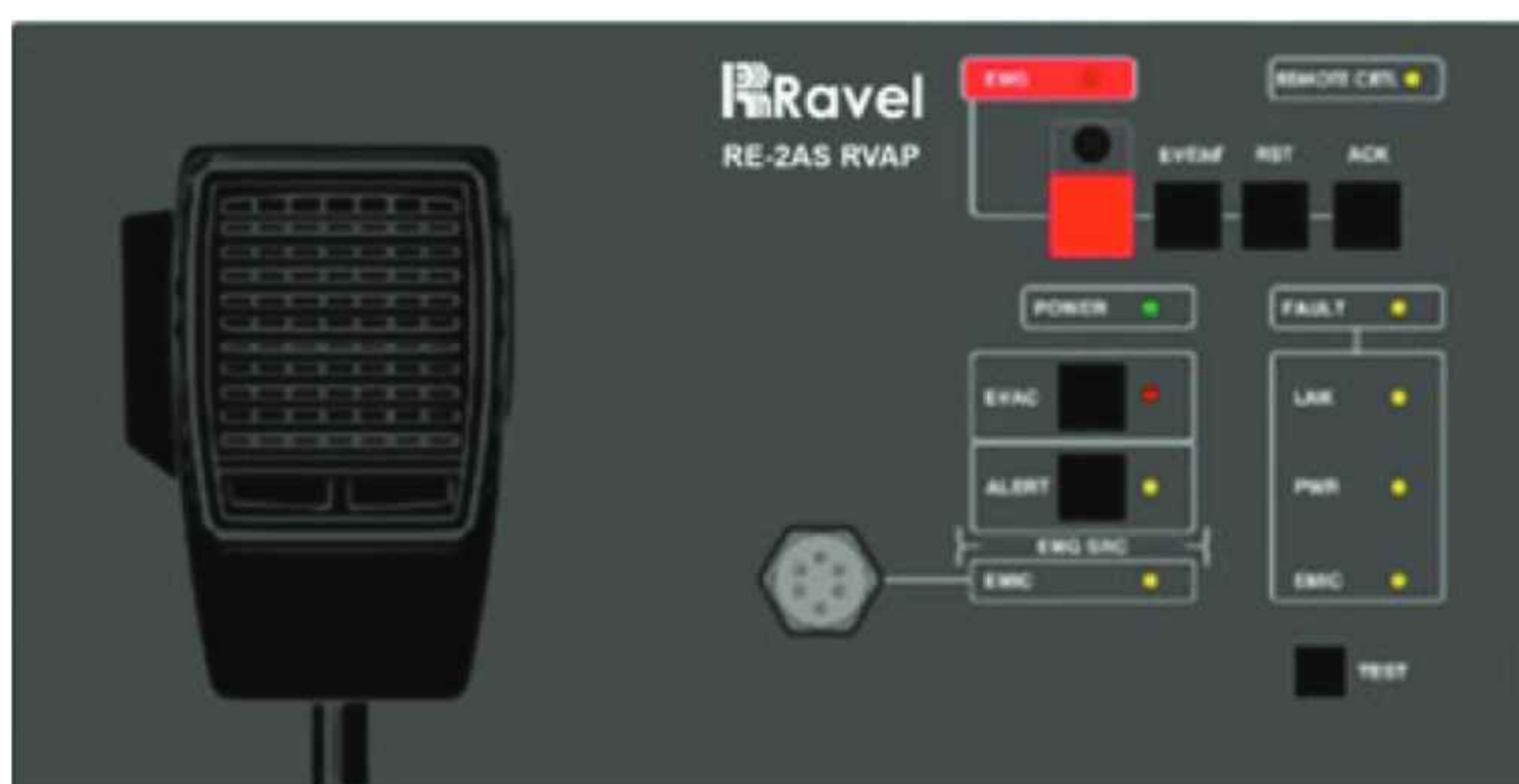
- 3 audio inputs.
- Up to 8 MPS-8Z multizone microphones or VAP-1 panels connected with CAT5 UTP cable.
- 2 class D amplifiers with two configurations for 100V/70V lines up to 500W.
- Digital audio matrix 6x6, expandable.
- 4-pre-amp outputs for external PA amplifiers connection.
- DSP: 3/7-band input/output parametric equalizer, loudness, Ravel sound enhancer, independent volume control per each input and output master.
- Access control by LCD display.
- Control for up to 16 Ravel AT6 attenuators.
- 8+2 GPIO ports, supervised for integration with Fire Alarm Control Panel.
- Interface MODBUS RTU RS 485 Half duplex.
- Voice Alarm / Emergency Features.
- Applus certified under EN 54-16, EN 54-4 and EN 60849 standards.
- Backup amplifier included.
- 10 minutes storage for pre-recorded messages.
- Failure detection and indication in all emergency functions.
- Fire Alarm Control Panel integration.
- Double player for pre-recorded evacuation messages.
- Manual control of emergency states with access control.
- Emergency log.
- Loudspeaker lines supervision.
- Line terminator without return for supervision.
- IP Rating: IP50.



RE-2AS RVAP

Voice Alarm Panel

- Up to 56 group memories of up to 8 zones per memory (448 zones of the system).
- Prior notice tone.
- Volume adjustment.
- Emergency condition general indicator.
- Fault condition general indicator.
- Power supply fault indicator.
- Emergency microphone fault indicator.
- Broadcasting of voice evacuation message indicator.
- Broadcasting of voice evacuation recorded message indicator.
- Broadcasting of voice alarm message indicator.
- Emergency controls, Reset, Acknowledge, Test, Alarm message, Evacuation message.
- Side port to connect up to 7 expansion keyboards.
- Priority configuration and operating parameters.
- Applus Certified.
- IP Rating: IP50.



RE-2AS XL | RE-2AS 4L

Loop Expansion Module

- Extend RE-2AS Systems up to 60 zones.
- LOOP redundant communication.
- System control and monitoring.
- Easy to install.
- Applus Certified.
- IP Rating: IP50.



RE-2AS EOL

End Of Line Device

- Supervision of 70V or 100V speaker lines.
- Easy connection and installation, surface mountable.
- Several devices can be connected to the same speaker line.
- Small dimensions.
- Low current consumption.
- Higher accuracy on impedance measurements.
- Supervision until the last speaker, even in low load speaker lines.
- No return cables.
- 400R/200R configurable load for 19kHz tone.
- Compatible with RE-2AS systems with the latest firmware version.
- Applus Certified.
- IP Rating: IP50.



RE-2ASMP8Z

Multi-Zone Paging Microphone

- 8-zone programmable buttons.
- System event activator.
- Recall function.
- Auto-lock function.
- LED indications for zone selection.
- LED indicators of the RE-2AS system's state (EMG, FLT or LINK).
- LED Indicators of busy and conceded word.
- Power directly from system thorough the UTP cable.
- High performance durable microphone capsule.
- Applus Certified.
- IP Rating: IP50.



RE-2AS PPT

Push To Talk Hand Microphone

- Suitable for RE-2AS series.
- Easy to install and use.
- Powered from RE-2AS USB port.
- Connect it to the audio input (usually AUDIO IN 1 – PRIO).
- Screw the support in the desired position.
- Connect the PCB to the RE-2AS USB port.
- Applus Certified.
- IP Rating: IP40.

e'Scape

Zone Wise Amplifier with Microphone

- 19", 3U Rack mountable.
- System ON, Power Fault, Common fault indications.
- Membrane Keypad for user friendly operation.
- Inbuilt 250 watts amplifier.
- Additional Amplifier can expand up to 250W.
- One Inbuilt Microphone for announcement.
- Zone Wise (Speaker line) Selection facility with LED indication.
- Voice / Alarm / All call selection facility.
- MIC mode selection facility.
- Programmable Mode (Alarm, Mic, Music, DVA) selection facility.
- 100V audio output for Speaker.
- Alarm activated on automatically announcing mode.
- Compatible with Avani via RS 485 Communication.
- Voice recording option available only with 250w Amplifier combination.
- DVD Input Facility.
- Zone expansion in Multiples of 16.
- CE Certified.
- IP Rating: IP40.



RE-EX Series

PA Expander

- 100V audio output for Speaker.
- Compatible Expander for e'Scape.
- Plug Type Connector for easy wiring.
- Alarm activated on automatically announcing mode.
- 24VDC Input voltage.
- 19" 2U Rack mountable.
- Power ON, Communication, Fault Indications.
- RS-485 Communication with Indication.
- Membrane Keypad for user friendly operation.
- Zone Wise /Zone Group (Speaker line) Selection facility with LED indication.
- IP Rating: IP40.

Revac Nx

Public Address Console

- Voice / Alarm / Allcall / DVA / MIC selection facility.
- Programmable Mode (Alarm, Mic, Music, DVA) Selection facility.
- 100 RMS audio output for Speaker.
- Fault Relay output for actuators.
- Alarm activated on automatically announcing mode.
- Compatible with RE-900 Series via RS 485 Communication.
- Zone expansion in Multiples of 16, upto 128 Zone.
- DVD Input Facility using 3.5mm jack.
- Operates on 220VAC 50 Hz, Main switch mode power supply.
- Standby backup 24VDC battery.
- 19", 3U Rack mountable.
- System ON, Power fault, Common Fault indications.
- Membrane Keypad for user friendly operation.
- Inbuilt amplifier maximum 125 / 250 watts can accommodate in a console.
- It can be integrated with any third party FACP.
- Additional Amplifier can expand up to 250W.
- One push to talk Microphone provided for announcement.
- Zone Wise (Speaker line) Selection facility with LED indication.
- All loudspeaker lines are supervised.
- Volume level indicator.
- IP Rating: IP40.



RE-XP Series

PA Expander

- 100V audio output for Speaker.
- Compatible Expander for Revac NX.
- Power ON, Charger ON indications.
- Membrane Keypad for user friendly operation.
- Alarm activated on automatically announcing mode.
- 24VDC Input voltage.
- 19" 2U Rack mountable.
- Plug Type Connector for easy wiring.
- RS-485 Communication with Indication.
- Zone Wise (Speaker line) Selection facility with LED indication.
- IP Rating: IP40.



RE-LS6C

PA Ceiling Mount Speaker

- Flush mount 15cm dynamic cone speaker.
- Three field selectable power taps 1.5W / 3W / 6W.
- ABS plastic grill with metal punched net.
- Easy to install with spring catch mount.
- Connectors with screw for hooking up the wires tightly.
- Protective dust cover at rear.
- The white colour of the grill has been selected to be obtrusive in virtually all interiors.
- Optional Volume control.



RE-LS3C

PA Ceiling Mount Speaker

- Flush mount 4" full range speaker, 3W/100V. cone speaker.
- Three field selectable power taps.
- ABS frame and powder coated mesh grille.
- Easy to install with spring catch mount.
- Connectors with screw for hooking up the wires tightly.
- Protective dust cover at rear.
- The white colour of the grill has been selected to be obtrusive in virtually all interiors.
- Optional Volume control.
- 100V line operation with power taps 3W, 1.5W, 0.75W and 0.375W.
- Suitable in humid condition.

RE-LU100XT

PA Horn Speaker

- Horn Type Speaker.
- COM 3.75W, 7.5W, 15W.
- ABS plastic.
- Wall / Ceiling mountable.
- IP Rating: IP40.



RE-LS20W

Wall Speaker

- Wall mounted with 15 cm cone speaker for announcement and paging.
- Attractive, stylish ABS white plastic box.
- Cost-effective high-power PA box.
- The specially designed sculptured edge offers both style and protection.
- Three field selectable power taps 10W - 5W- 2.5W.
- Equipped with the transformer to provide tappable 100V line.
- Provision to connect with 100V line and 4 ohms.
- Optional Volume control.
- IP Rating: IP40.



RE-LS3W

PA Wall Speaker

- Wall mounted with recheck cone speaker for announcement and paging.
- Attractive, stylish ABS white plastic box.
- The specially designed slim speaker is obtrusive in all interiors.
- Three field selectable power taps.
- Equipped with the transformer to provide 100v line.
- Ideal for office cabin, workstations, classrooms, shops, malls etc.
- 100V line operation with power taps 3W, 1.5W, 0.75W, and 0.375W.

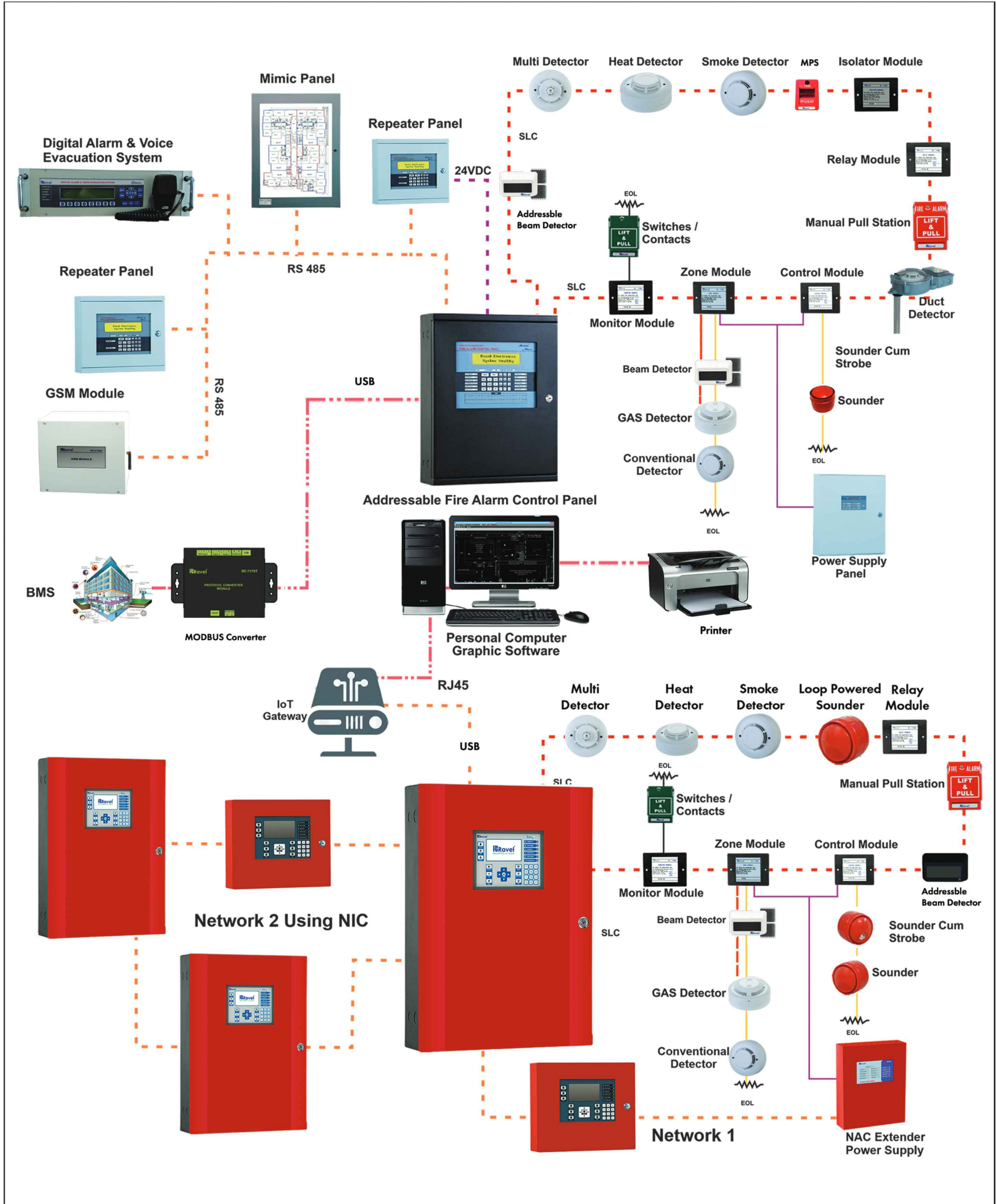
RE-LS6W

Wall Speaker

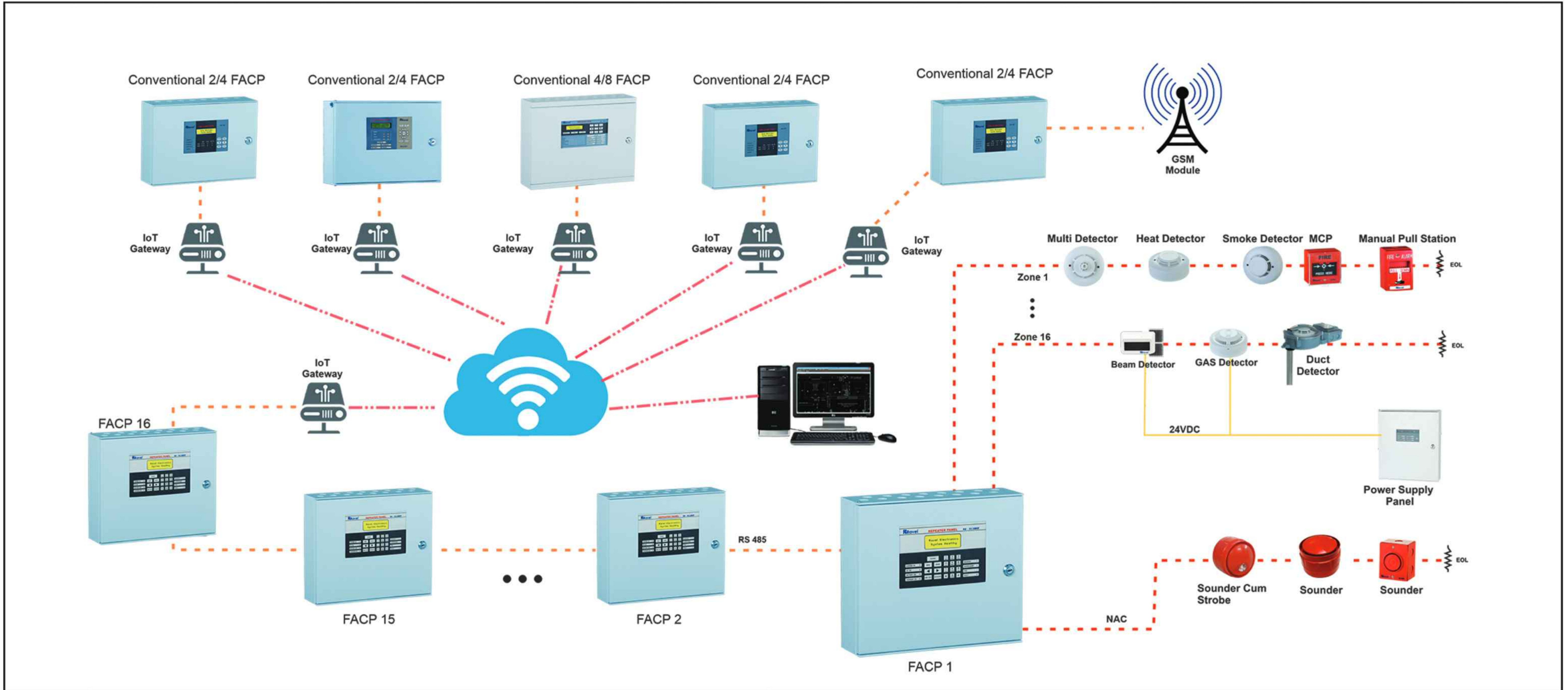
- Wall mounted with 12.5 cm cone speaker for announcement and paging.
- Attractive, stylish ABS white plastic box.
- The specially designed slim speaker is obtrusive in all interiors.
- Three field selectable power taps 1.5W, 3W, 6W.
- Equipped with the transformer to provide 100v line.
- Ideal for office cabin, workstations, classrooms, shops, malls etc.
- Optional Volume control.
- IP Rating: IP30.



ADDRESSABLE SYSTEM

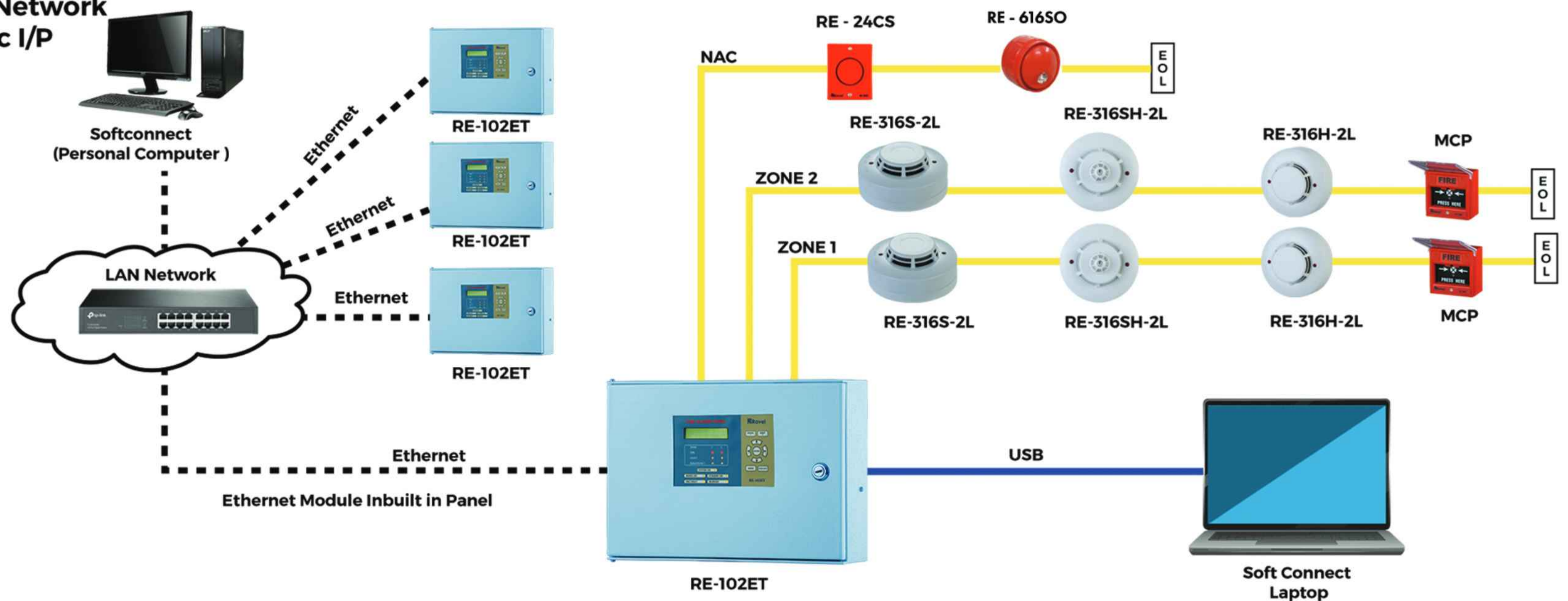


CONVENTIONAL SYSTEM

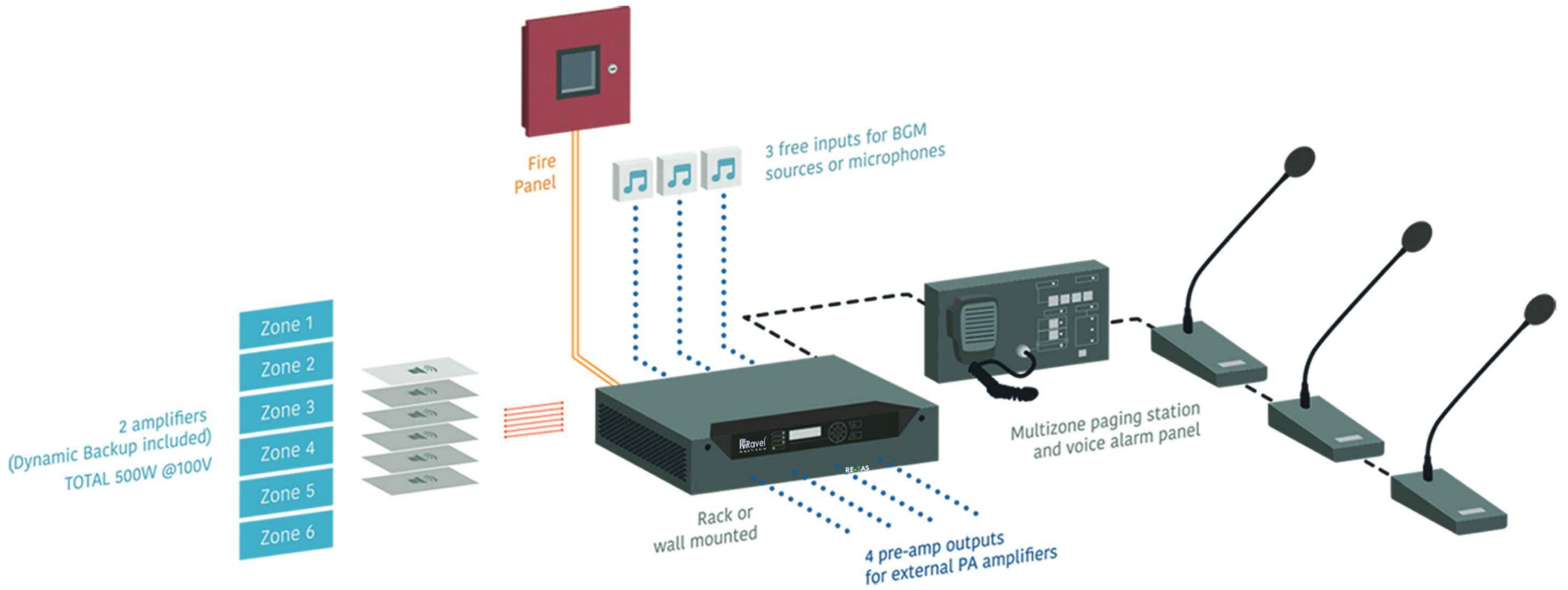


RE-102ET Schematic Diagram

Note : 1000 Panels Can Be Connected in Network With Static I/P

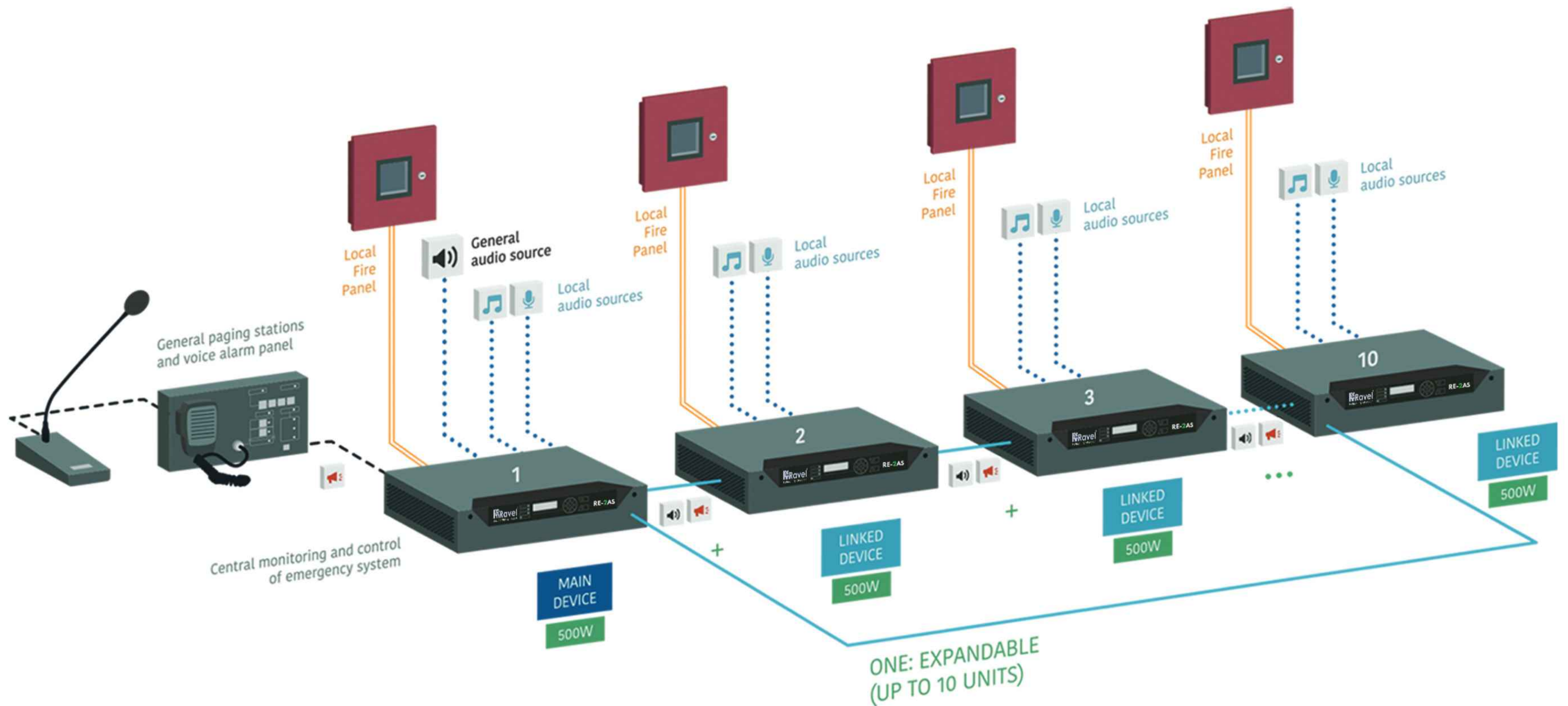


RE-2AS - STANDALONE UNIT



Connection for up to 10 equipment with double communication link. Up to 60 zones and speaker lines.

RE-2AS - EXPANDABLE SYSTEM



Connection for up to 10 equipment with double communication link. Up to 60 zones and speaker lines. EVAC and ALERT local messages + Autonomous emergency power supply for each ONE unit.

🔊 General audio source 🎵 Local audio source (background music) 🎤 Local audio source with priority 📢 General paging stations and voice alarm panel

S.No	Project Name	Vertical	Product Details	Region
1	Sharjah Academy of the Performance Art, Sharjah University	Education	Fire Alarm System	U.A.E
2	Student Accomodation (G+1 Building , A&B),Sharjah University	Education	Fire Alarm System	U.A.E
3	B+G+3P+8T+2PH Building,Jumeirah Village Circle, Dubai	Residential	Fire Alarm System	U.A.E
4	1B+G+2P+9+HC+Roof Building, Silicon Oasis, Dubai	Residential	Fire Alarm System	U.A.E
5	2B+G+8+HC+Roof Residential Building, Dubai Land, Dubai	Residential	Fire Alarm System	U.A.E
6	B+G+8+Roof Building, Arjan, Dubai	Residential	Fire Alarm System	U.A.E
7	2B+G+7+Roof Building,Majan, Dubai	Residential	Fire Alarm System	U.A.E
8	UG+G+P+5+Roof Building with retail, International City, Warsan 4th, Dubai	Residential	Fire Alarm System	U.A.E
9	3B+G+9+GYM+Roof Residential Building, Al Quasis Industrial 5th, Dubai	Residential	Fire Alarm System	U.A.E
10	1B+G+4+HC+Roof Residential Building, Al Barsha 4th, Dubai	Residential	Fire Alarm System	U.A.E
11	B+G+4+Roof Residential Building,Al Barsha south 4th, Dubai	Residential	Fire Alarm System	U.A.E
12	G+3P+19+Roof Residential Building,Al Nahda 1, Dubai	Residential	Fire Alarm System	U.A.E
13	3B+G+12F+Roof Residential Building,Al Jadaf, Dubai	Residential	Fire Alarm System	U.A.E
14	G+P+12+Roof Residential Building,Al Nahda 1, Dubai	Residential	Fire Alarm System	U.A.E
15	B+G+12+HC Residential Building,Al Nahda 2, Dubai	Residential	Fire Alarm System	U.A.E
16	B+G+10 F Residential Building,wadi al safra 5,Dubai	Residential	Fire Alarm System	U.A.E
17	B+G+8+Roof Residential Building, Arjan,Dubai	Residential	Fire Alarm System	U.A.E
18	B+G+7F+Roof Residential Building, Nad Al Hamar,Dubai	Residential	Fire Alarm System	U.A.E
19	2B+G+7F+Roof Residential Building,Majan,Dubai	Residential	Fire Alarm System	U.A.E
20	12 nos. G+2F Residential buildings,Kalba,Dubai	Residential	Fire Alarm System	U.A.E
21	G + 6F + GYM + Roof Residential Building, Al Warqaa,Dubai	Residential	Fire Alarm System	U.A.E
22	DHAID Livestock Building,Al Dhaid,Sharjah	Commercial	Fire Alarm System	U.A.E
23	Khorfakan Municipality, Khorfakan, Sharjah	Government	Fire Alarm System	U.A.E
24	Substation , saih al salam,Dubai	Industrial	Fire Alarm System	U.A.E
25	B+G+5 Residential Building, International City,Dubai	Residential	Fire Alarm System	U.A.E
26	2B+G+7+GYM Residential Building, Al Refaa,Dubai	Residential	Fire Alarm System	U.A.E
27	G+M Office & factory,saih shuaib ,Dubai	Residential	Fire Alarm System	U.A.E
28	Fayoum University buildings, Faiyum	Education	Fire Alarm System	EGYPT
29	Belco Foods Farm,Cairo	Commercial	Fire Alarm System	EGYPT
30	Decent life (Hayakarima), Cairo	Commercial	Fire Alarm System	EGYPT
31	Mayo City Court,New Capital	Government	Fire Alarm System	EGYPT
32	Hyatt Town Mall in Obour City, Cairo	Hospitality	Fire Alarm System	EGYPT
33	Hanimex Baxis Mall store,, Cairo	Commercial	Fire Alarm System	EGYPT
34	Inhouse store in Bakis Mall, Cairo	Commercial	Fire Alarm System	EGYPT
35	Ideal house store in Paxis Mall, Cairo	Commercial	Fire Alarm System	EGYPT
36	Pinokio store Paxis Mall, Cairo	Commercial	Fire Alarm System	EGYPT
37	Areka store in Paxis Mall, Cairo	Commercial	Fire Alarm System	EGYPT
38	Shata store in Baksis Mall, Cairo	Commercial	Fire Alarm System	EGYPT
39	Carpet City store in Baksis Mall, Cairo	Commercial	Fire Alarm System	EGYPT
40	Red Sea Governorate Building, Cairo	Government	Fire Alarm System	EGYPT
41	15 branches of the Agricultural Bank, Qena	Banking	Fire Alarm System	EGYPT
42	Park Street Mall, Sheikh Zayed city, Cairo	Commercial	Fire Alarm System	EGYPT

S.No	Project Name	Vertical	Product Details	Region
43	Toyota Abu Hetta Center, Beni Suef	Commercial	Fire Alarm System	EGYPT
44	Ihab's store, industrial zone, Hurghada	Industrial	Fire Alarm System	EGYPT
45	Hyde Park Mall, Fifth tagamoa	Commercial	Fire Alarm System	EGYPT
46	More than 35 branches for a good life in Sohag and Qena	Commercial	Fire Alarm System	EGYPT
47	The administrative capital, Assiut	Government	Fire Alarm System	EGYPT
48	Venus Grain Factory and Silos, Giza	Commercial	Fire Alarm System	EGYPT
49	Distribution rooms in Al-kaft Industrial City, Qena Governorate	Commercial	Fire Alarm System	EGYPT
50	Fresh Company Industrial control station, Qena	Commercial	Fire Alarm System	EGYPT
51	Suez Steel Company, Suez	Industrial	Fire Alarm System	EGYPT
52	Japanese University, Alexandria	Education	Fire Alarm System	EGYPT
53	Tai Company, Cairo	Commercial	Fire Alarm System	EGYPT
54	The main control hall of the project Agricultural greenhouses, AlAhoun - Fayoum Governorate	Commercial	Fire Alarm System	EGYPT
55	Gas Tech stations in Cairo, Delta and Upper Egypt	Industrial	Fire Alarm System	EGYPT
56	Suez Canal Authority, Suez	Government	Fire Alarm System	EGYPT
57	El Sewedy EGY Plast Company, Tenth of Ramadan City	Industrial	Fire Alarm System	EGYPT
58	Saveto Company, Cairo	Commercial	Fire Alarm System	EGYPT
59	Kama Coating Company, Tenth of Ramadan City	Commercial	Fire Alarm System	EGYPT
60	Egyptian Insulation Company, Cairo	Commercial	Fire Alarm System	EGYPT
61	Flex company, Cairo	Commercial	Fire Alarm System	EGYPT
62	Pier Mall Administrative Capital, New capital, Cairo Governorate	Commercial	Fire Alarm System	EGYPT
63	Raya Company, 6th of October, Giza Governorate	Commercial	Fire Alarm System	EGYPT
64	Sewage pumping stations in Kafr Ismail village Gharbiya Governorate	Commercial	Fire Alarm System	EGYPT
65	Cairo Festival City, Cairo	Commercial	Fire Alarm System	EGYPT
66	20 West Mall Sheikh Zayed city, Giza Governorate	Commercial	Fire Alarm System	EGYPT
67	Mgarr Mall, October city, Cairo	Commercial	Fire Alarm System	EGYPT
68	Dabaa nuclear reactor, El Dabaa, Matrouh Governorate	Industrial	Fire Alarm System	EGYPT
69	PetroGulf Petroleum, Maadi, Cairo	Industrial	Fire Alarm System	EGYPT
70	AL Sather Market, Manama	Commercial	Fire Alarm System	BAHRAIN
71	King Fahad Medical city, Riyadh	Healthcare	Agent Release panel & Devices	KSA
72	Mobily, Riyadh	Telecommunication	Agent Release panel & Devices	KSA
73	Aramco accommodation, Multiple locations in Saudi Arabia	Residential	Fire Alarm System	KSA
74	Berkinstock, Muscat	Commercial	Fire Alarm System	OMAN
75	Newyorker, Muscat	Commercial	Fire Alarm System	OMAN
76	Farmasi, Muscat	Commercial	Fire Alarm System	OMAN
77	Joyalukkas, Muscat	Commercial	Fire Alarm System	OMAN
78	Deraah, Muscat	Commercial	Fire Alarm System	OMAN
79	Al Zain Food Express, Muscat	Commercial	Fire Alarm System	OMAN
80	CCED (CC Energy Development S.A.L.), Muscat	Government	Fire Alarm System	OMAN
81	Steel Factory, Muscat	Industrial	Fire Alarm System	OMAN
82	Gulf College, Muscat	Education	Fire Alarm System	OMAN

OUR PURSUIT

THE AIM OF THE COMPANY IS TO SERVE THE FIRE DETECTION INDUSTRY WITH ROBUST, TROUBLE FREE AND WORLD-CLASS FIRE ALARM PANELS AND DEVICES. THE CORNERSTONE OF THE PERSONNEL PLAN IS TO SET THE POLICIES, RECRUIT THE TEAM AND TRAIN THEM INTENSIVELY AND EFFECTIVELY TO CASCADE THE VISION OF THE ORGANIZATION.

OUR REGIONAL OFFICES IN

RAVEL AMERICAS INC
U.S.A 

2855 NW 112th Ave Suite # 2 Miami,
Doral, FL 33172, United States

RAVEL ELECTRONICS PVT LTD
INDIA 

150-A, Electronics Industrial Estate,
Perungudi, Chennai - 600096. India

RAVEL DMCC
DUBAI-UAE 

Unit No:G30,DMCC Business centre,
Level No -13,AG Tower, Dubai, UAE

CHENNAI | MUMBAI | DELHI | BANGALORE



+971 56 484 4820
+971 55 656 9588



www.raveldmcc.com
www.ravelfire.com



sales@raveldmcc.com

GET IN TOUCH!

Scan to Know More About Us

