

Aaral
by Ravel



INTELLIGENT ADDRESSABLE FIRE ALARM SYSTEM PRODUCT CATALOGUE

ASIA-PACIFIC REGION'S LARGEST  FIRE ALARM MANUFACTURER.

INDIA'S FIRST AND ONLY  FIRE ALARM MANUFACTURER.

UL 10TH EDITION



ABOUT OUR COMPANY

Ravel Electronics Pvt. Ltd was established in 2003 and has grown to become a trusted name in the global fire and life safety industry and a market leader in Asia-Pacific's UL fire & PAVA mid-market space offering a comprehensive range of Intelligent addressable & conventional fire alarm systems, extinguishant control Panels and public address & voice alarm systems adhering strictly to stringent UL, FM and LPCB Standards. The factory is approved to stringent ISO 9001: 2015 Quality Management System standards.

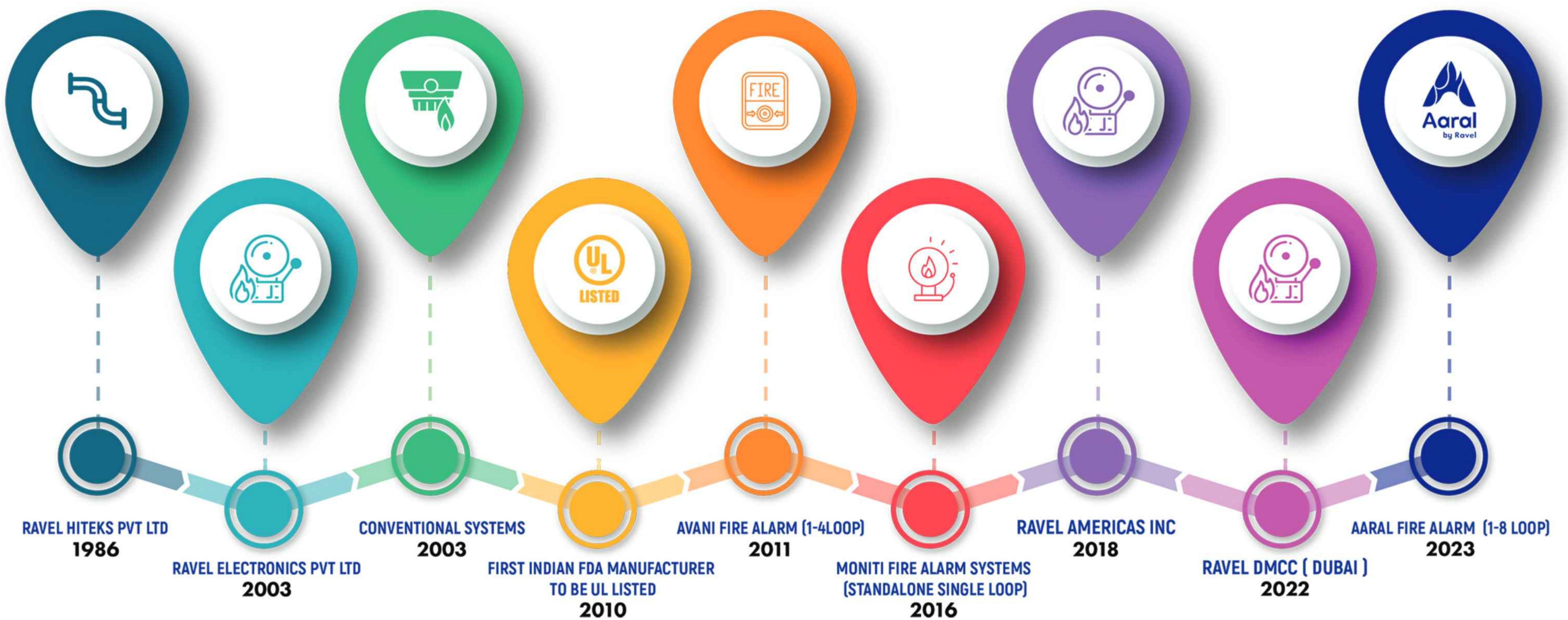
Ravel Electronics Pvt. Ltd is still the first and only Indian manufacturer and the second in Asia to obtain UL Certification for Fire alarm panels tailored to meet diverse needs and stringent safety standards

Ravel Electronics is headquartered in India with regional offices located in USA and UAE (Dubai) and employs over 400 people worldwide. Ravel has the world class 2 R&D centers employing highly skilled and experienced R&D engineers developing innovative futuristic solutions & products to cater to needs of the customers and market.

The company has a manufacturing capacity of over 60,000 panels and 5,00,000 detectors per annum covering microprocessor based intelligent addressable, conventional, gas release/extinguishing and PAVA systems- along with devices and accessories from a 100,000 square foot facility in Chennai, India

Ravel caters to more than 1 Million satisfied clients spread across 32 countries through 100+ distributors around the globe.

MILESTONE





The UL 10th edition listed Aaral Series of Analogue addressable fire alarm control system is a highly flexible, powerful & easy-to-use and maintain fire and alarm control for mid-sized and large facilities.

Features and Benefits.

- Available in 4 & 8 loop variants networkable.
- Support 250 devices of any combination in a loop.
- Ready out-of-the-box for easy installation.
- Networkable up to 16 panels supporting 32000 devices on a single peer to peer network.
- Loop powered sounders & sounder-strobe- reduced Installation costs.
- Large 4.3" color graphical TFT display for easy, intuitive operation.
- Conveniently located USB port simplifies the transfer of panel information and programming.
- Facility to monitor and control the fire alarm panels through GUI.

AARAL X4/X8

4 & 8 Loop Addressable Fire Alarm Control Panel



- UL Listed 864 10th Edition.
- Ready out of the box for easy installation.
- Available in 4 & 8 loop variants networkable upto 16 panels (16 Kms peer to peer network).
- Support 250 devices of any combination in a loop.
- 8 loop panel supports 2000 devices on one panel and 4 loop panel supports 1000 devices in one panel.
- Support 32000 devices of any combination on a single peer to peer network.
- Large 4.3" color graphical TFT Display.
- Compatible with loop powered sounders and sounder-strobes.
- Auto learn feature for faster programming of new devices.
- Supports 10,000 events logs.
- Integrated USB port.
- 999 event queues for each type of Alarm, Supervisory, and Fault for ease & access.
- Maximum 2,000 groups with inter-panel group facility.
- Pre-alarm facility, Alarm Verification facility, Configurable Day / Night mode.
- Programmable auto silence facility, Programmable AC loss delay, Programmable silence inhibits.
- Two programmable inputs: one for remote fire / conventional zone and another one for remote Fire.
- Two numbers of supervised synchronized NAC's.
- Available in red, black and white color variants.
- Aaral X4 (400W x 550H x 124D) mm, Aaral X8 (494W x 720H x 124D) mm.
- IP Rating: IP50.

AARAL RP

Addressable Repeater Panel

- Listed to UL 864 10th Edition.
- Active repeater.
- 10,000 events log with RTC (real time clock) per each node with distributed. different search option.
- Programmable auto silence facility, Programmable silence inhibits.
- Programmable reminders for alarm, supervisory and fault.
- One Form C fault relay.
- All field wiring are power limited and supervised.
- USB 2.0 interface for PC connectivity.
- Network Interface Card (NIC) Optional.
- IP Rating: IP50.



RE-551P

Addressable Manual Pull Station

- Complies UL 38 8th edition.
- DIP Switches for addressing.
- Address ranges from 1 to 250.
- Inbuilt isolator.
- SLC communication with the panel.
- Lift and push.
- Status indicator.
- Key lock access.
- Low Standby Current.
- IP Rating: IP40.

RE-557P series

Addressable Manual Pull Station

- Complies to UL 38 8th edition.
- Dual action pull stations.
- Painted Die Cast Housing.
- Corrosion Inhibited surfaces.
- DIP Switches for addressing.
- All stations offer hex screw or key lock access.
- Inbuilt isolator.
- Compatible to single gang box.
- 10 A, 120VAC snap Action Switch (S.P.S.T.).
- Enclosure Complies IP40 as per IEC standard 60529.



UL 7th Edition Detector

Addressable Detectors



- Complies UL 268 7th edition.
- Built-in short circuit isolator and dual LEDs for 360° visibility.
- 3 models covering Addressable optical smoke, heat & multi-criteria (smoke and heat) available
- Ideal for both fast-flaming and slow smoldering fires.
- Advanced algorithms provide analogue detection discrimination.
- High immunity against unwanted alarms.
- Stable smoke sensing chamber. No adjustment or replacement required.
- Sleek low-profile housing design.
- Fixed temperature & Rate-of-Rise (ROR) detector available
- Optional remote LED output.
- Easy installation with simple address setting DIP switches.
- Dual photoelectric smoke and heat sensors to detect either smoke, heat or a combination of the phenomena.
- IP Rating: IP42.

RE-736B

Conventional Alarm Bell

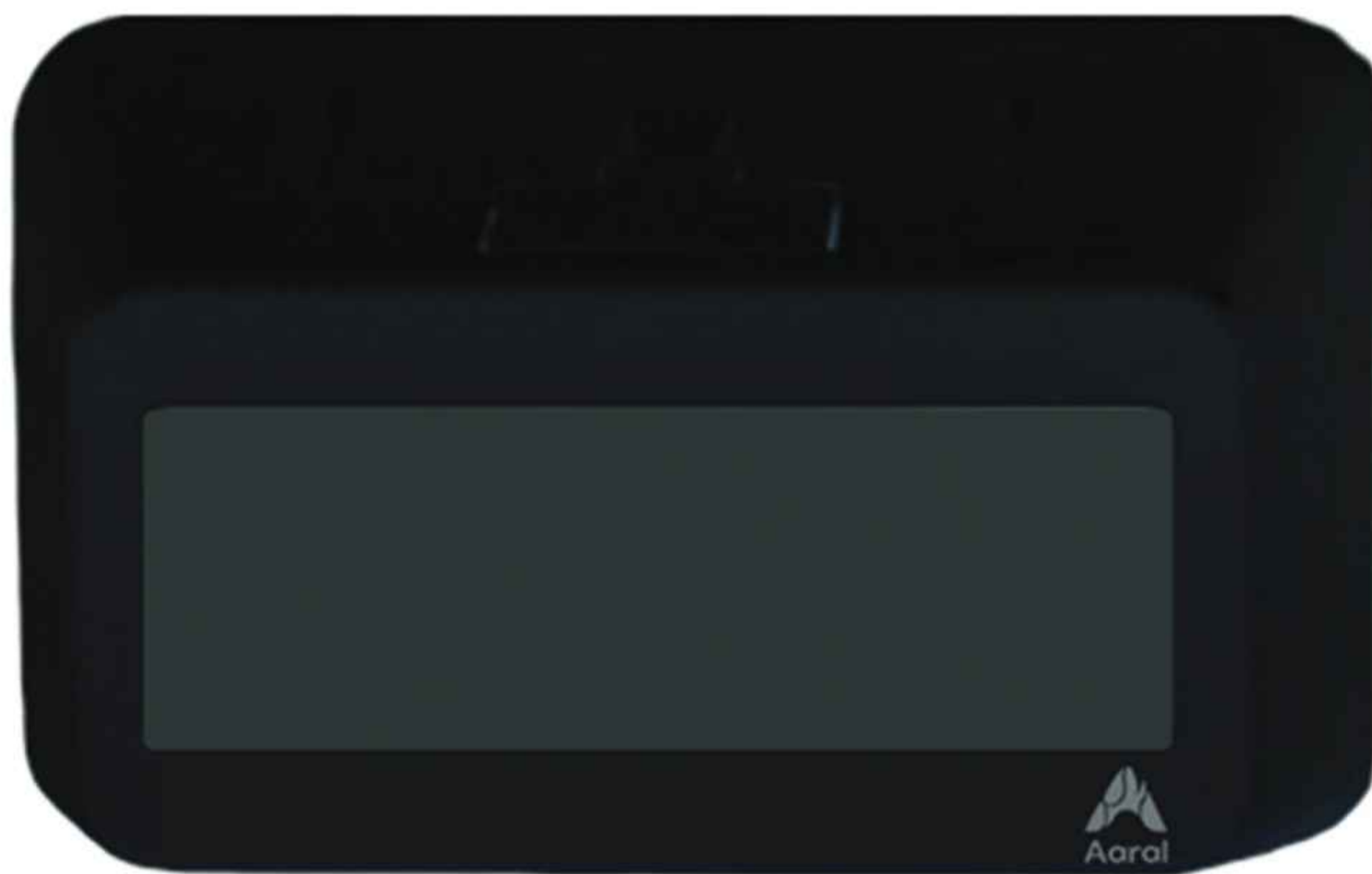
- LPCB Approved.
- High efficiency low current consumption on 24VDC motorized bells.
- Terminals will accept 2.5mm cables.
- Simple installation via multi-fixing base plate for all types of location.
- Fitted with two series diodes for fault monitoring.
- Fully suppressed and there is no interference with other equipment.
- IP Rating: IP21.



RE-428DU-A

Addressable Duct detector

- Highly efficient single sampling tube.
- Easy to install.
- One-pipe air sampling system.
- Sampling tube available with 2 feet length.
- Patented venturi pipe and duct housing.
- Test hole on cover.
- Simple installation, Simple service and maintenance.
- Device addressing via 8 way DIP switch.
- IP Rating: IP54.



RE-757 SERIES

Addressable Modules

- Complies UL 864 10th edition.
- Status LED.
- DIP switch for addressing.
- Inbuilt isolator.
- Single gang box.
- SLC communication with the panel.
- IP Rating: IP50.

AR-380FR/HR

Addressable Optical Beam Detector

- Address range 1 -250 compatible with Aaral.
- User Friendly Installation.
- In built laser light for easy alignment.
- Supports 5-to-100-meter range.
- Adjusting Screws at detector for precise alignment.
- Infrared transmitter & receiver located in a single housing.
- In built drift compensation for monitoring dirt build up on the optical system.
- Configurable Sensitivity Threshold 18% ,30%, 50%.
- Available in 50 & 100 meters variants.
- IP Rating: IP50.



○ RE-757C – Control Module.

- Supervised 24 VDC.

○ RE-757R – Relay Module.

- 1 Form C, Potential Free Contact.

○ RE-757X – Input Output Module.

- Supervised Contact Monitoring Circuit.
- Form C, Potential Free Contact.

○ RE-757M – Monitor Module.

- Supervised Contact Monitoring Circuit.

○ RE-757R2 – Dual Relay Module.

- 2 Form C, Potential Free Contact.

○ RE-757X2 – Dual Input Output Module.

- 2 Supervised Contact Monitoring Circuit.
- 2 Form C, Potential Free Contact.

○ RE-757M2 – Dual Monitor Module.

- 2 Supervised Contact Monitoring Circuit.

○ RE-757Z – Zone Module.

- Supervised 24V Input & Resettable 24V output.
- Supervised Class B Initiating Device Circuits.
- 2 / 4 wire conventional detector interface facility.

RE-657SO / 658SO

Addressable Sounders

- Complies to UL464.
- Ultra-low current & high dB output.
- Configurable Volume- low/High.
- 7 Different tone selection by using DIP switch.
- Addressing by 8-way DIP switch.
- Inbuilt isolator.
- Sound Level at 3 meter 85Db @ 24V.
- All Tones are Synchronizable.
- 2 & 4 Wire Sounders are available.
- IP Rating: IP60.



RE-677SO | 678SO

Addressable Ceiling Mount Sounder

- Complies to UL464.
- Ultra-low current & high dB output.
- Ceiling Mount type.
- All Tones are Synchronizable.
- The low frequency 520 Hz signal is unique, and is ideal for hotels, dormitories, and other sleeping occupancies.
- Addressing by 8-way DIP switch.
- 7 Different tone selection via panel.
- Slim and sleek.
- Sounder volume low / high facility.
- 2 & 4 Wire Sounders are available.
- IP Rating: IP42.



RE-657SS / 658SS

Addressable Sounder-Strobe

- Complies to UL464, UL1638,UL1971.
- Ultra-low current & high dB output.
- Configurable Volume- low/High.
- 7 Different tone selection via panel.
- Configurable as only sounder/sounder cum strobe/only strobe.
- Addressing by 8-way DIP switch.
- Inbuilt isolator. • Flash duration 20 ms.
- Sound Level at 3 meter 85Db @ 24V.
- Candela Low and High selection.
- Sounder and strobe OFF facility.
- 2 & 4 Wire Sounder-Strobes are available.
- The low frequency 520 Hz signal is unique, and is ideal for hotels, dormitories, and other sleeping occupancies.
- IP Rating: IP60.



RE-657ST / 658ST

Addressable Strobe

- Complies to UL464, UL1638,UL1971.
- Ultra-low current.
- Addressing by 8-way DIP switch.
- Inbuilt isolator.
- Candela Low and High selection.
- Flash duration 20 ms.
- 2 & 4 Wire Strobes are available.
- IP Rating: IP60.



RE-757RT

TCP/IP or MODBUS Converter

- Give full details of inputs and outputs of FACP.
- LED for indicating power and transceiver status.
- The protocol converter has 3 Inputs USB, RS485, Contact Inputs.
- Configurable 2 Output mode RS485 Modbus and TCP/IP - Modbus / PC Software.
- 10/100M auto sensing Ethernet mini card for embedded device networking.
- TCP Server & UDP driver operation modes.
- Low power consumption.
- IP Rating: IP50.

AARAL SOFT

Graphic Software

- Pop up for any events like fire, fault, power fault, etc.
- Event Fetch from fire alarm control panel facility.
- Single / Multi Mode Floor Configuration facility.
- Floor Configuration using DWG files.
- Event log with configurable report facility.
- Remote Monitoring facility.
- User friendly with windows-based software.
- Allows full client-server facility.
- Multi-Mode (Ethernet / USB)Communication Facility.
- Facility to monitor and control the fire alarm control panels from a single window.
- Unambiguous Visual & Audible alerts for fire and fault conditions.
- Web browser based software.



RE-PS5

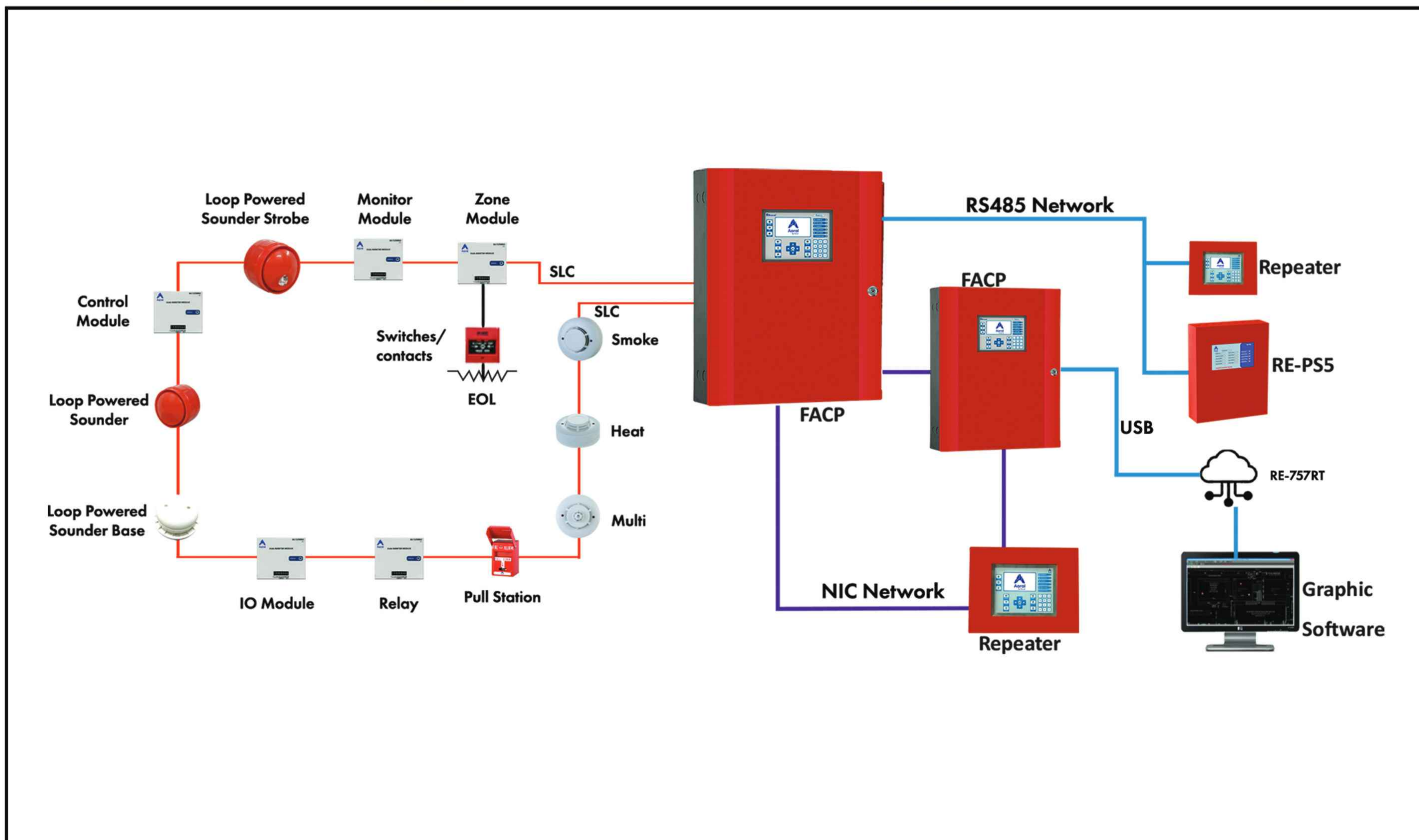
NAC Extender Power Supply

- Listed to UL 864 10th edition.
- Operates on 110 – 230 VAC.
- System ON, Mains and standby status indication.
- Standby battery backup with built in charging.
- One remote alarm input.
- One Form-C Common fault relay.
- 2 No's of 24VDC output with short circuit protection.
- 2 No's of NAC output with short circuit protection.
- AC Loss Delay facility.
- Auto Silence facility.
- Trouble Reminder facility.
- All field wiring is power limited and supervised except battery and AC Input.
- Inbuilt Keys for Acknowledge & Restart.
- Ground fault detection facility @ 0 Ohms.
- Inbuilt RS 485 Bus communication.
- Addressing by 8-way DIP switch.
- System(field) Configurations using 8-way DIP switch.
- IP Rating: IP-50

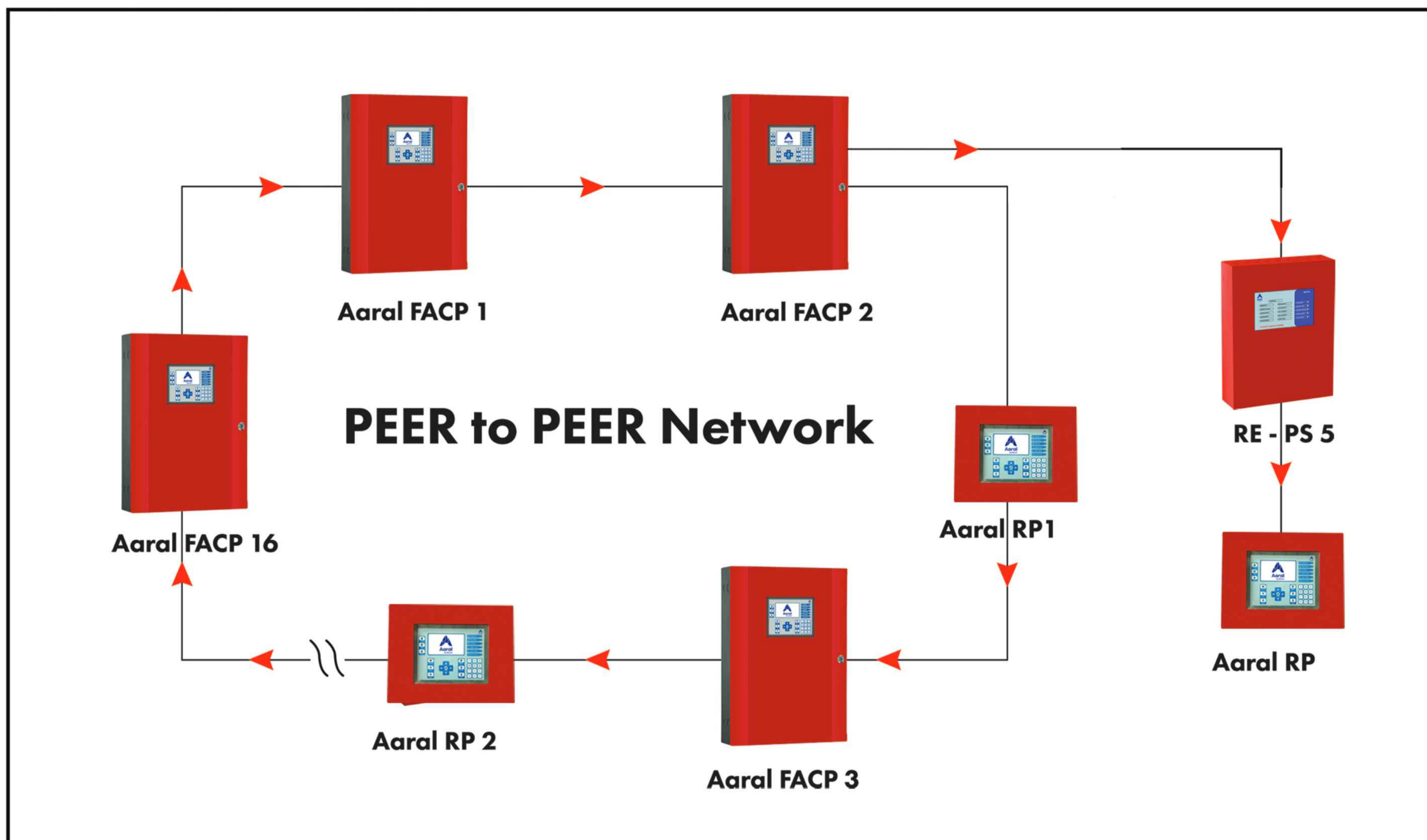


SCHEMATIC DIAGRAM

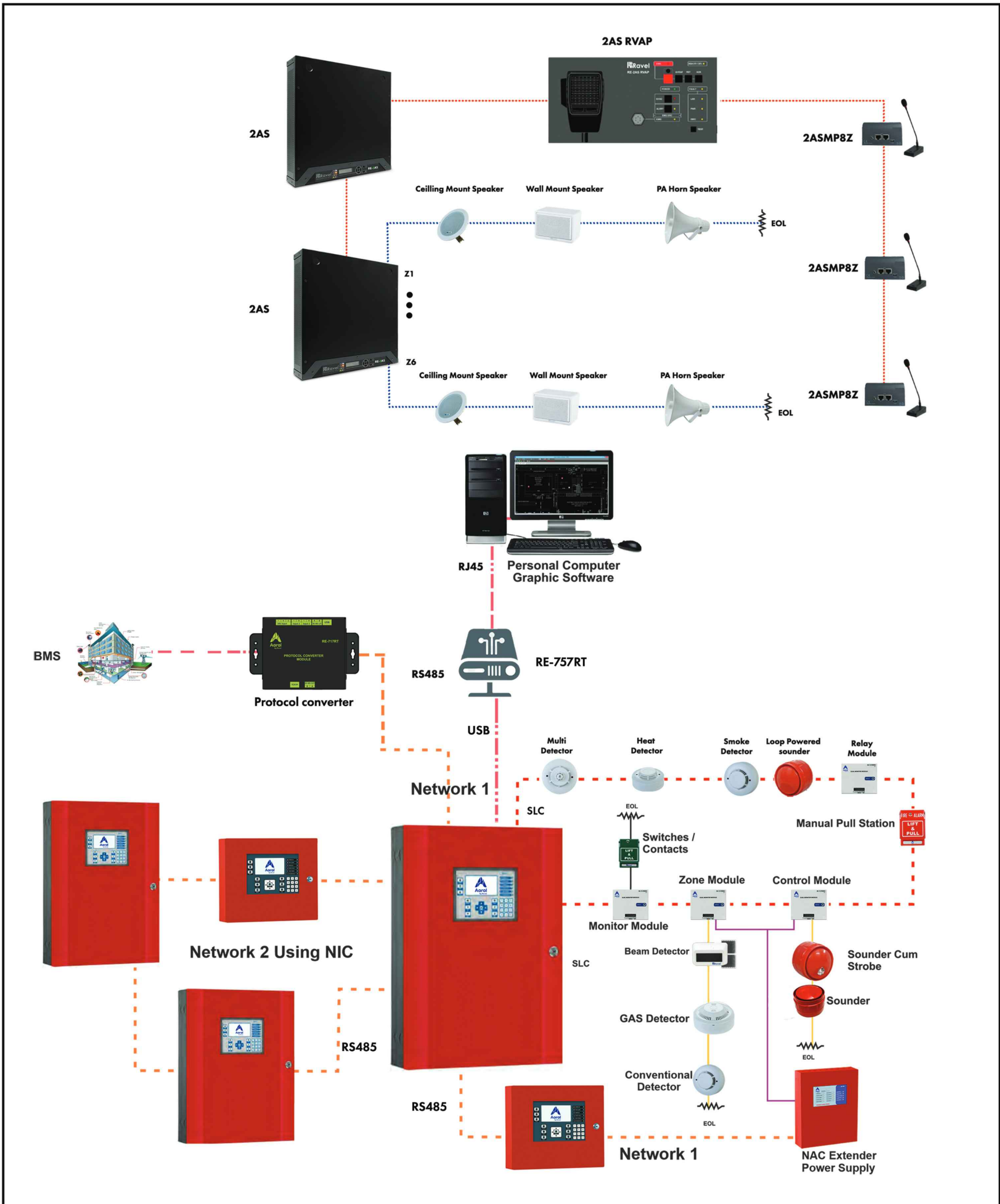
TOPOLOGY



NETWORK TOPOLOGY



ADDRESSABLE SYSTEM

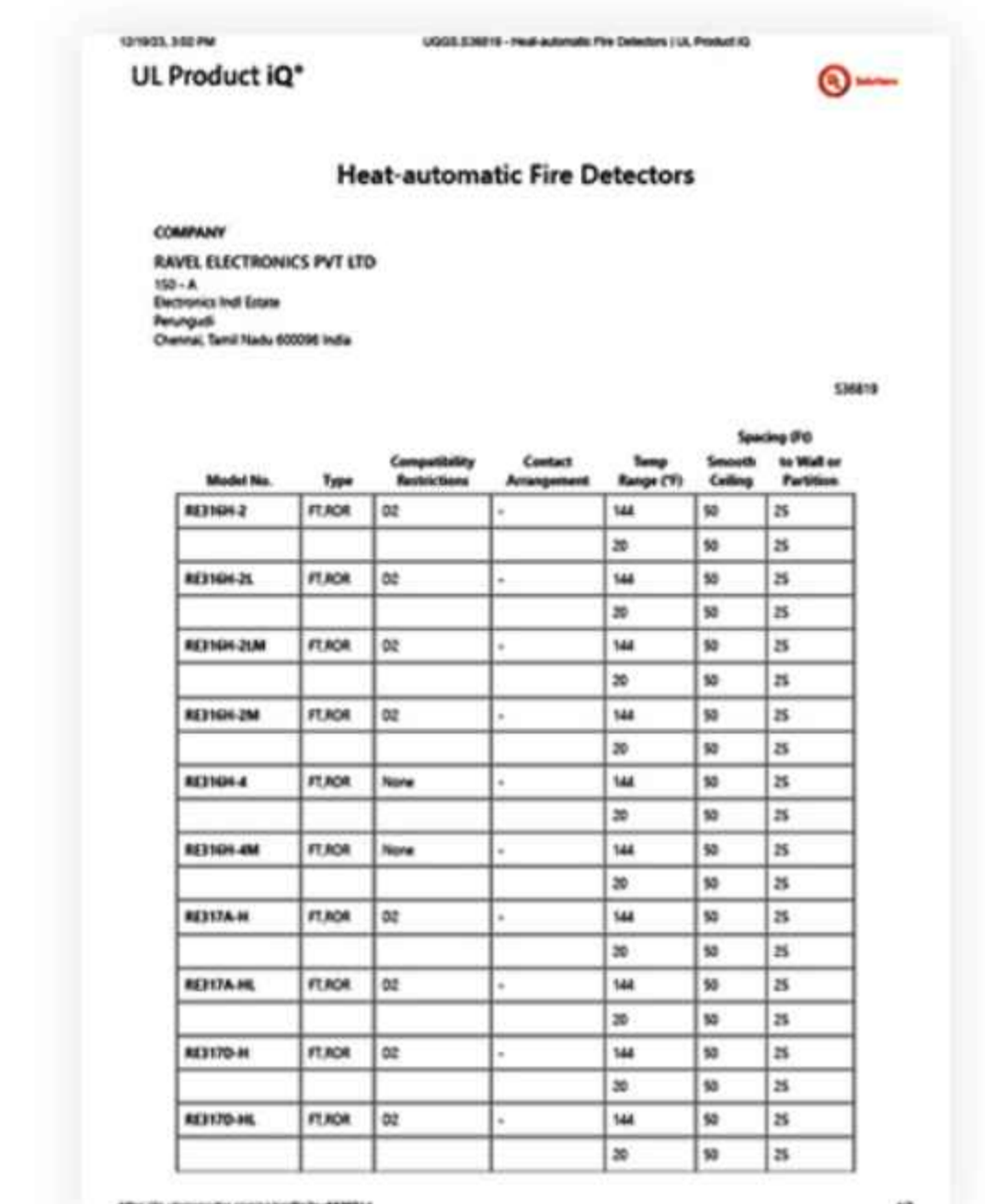
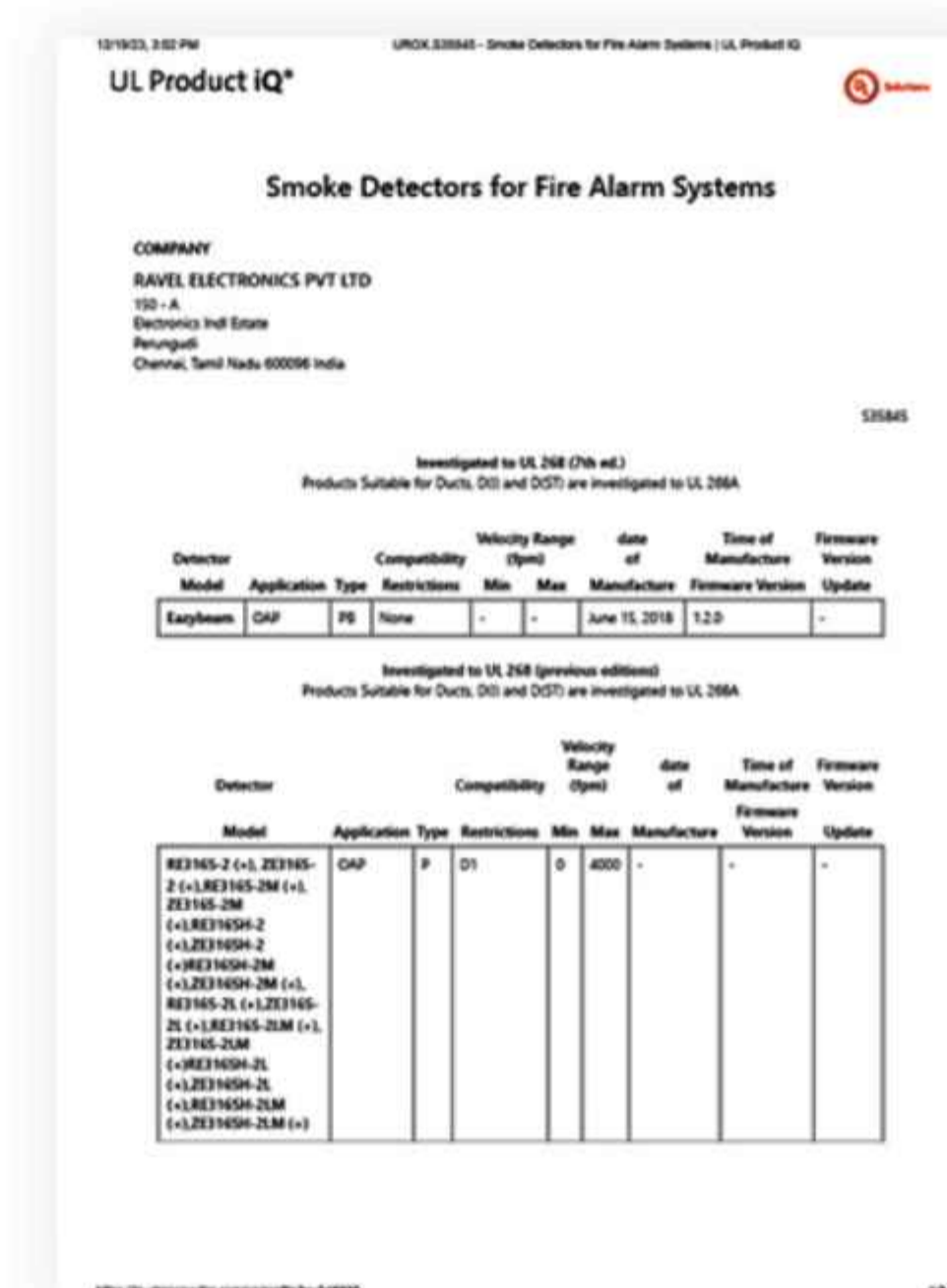
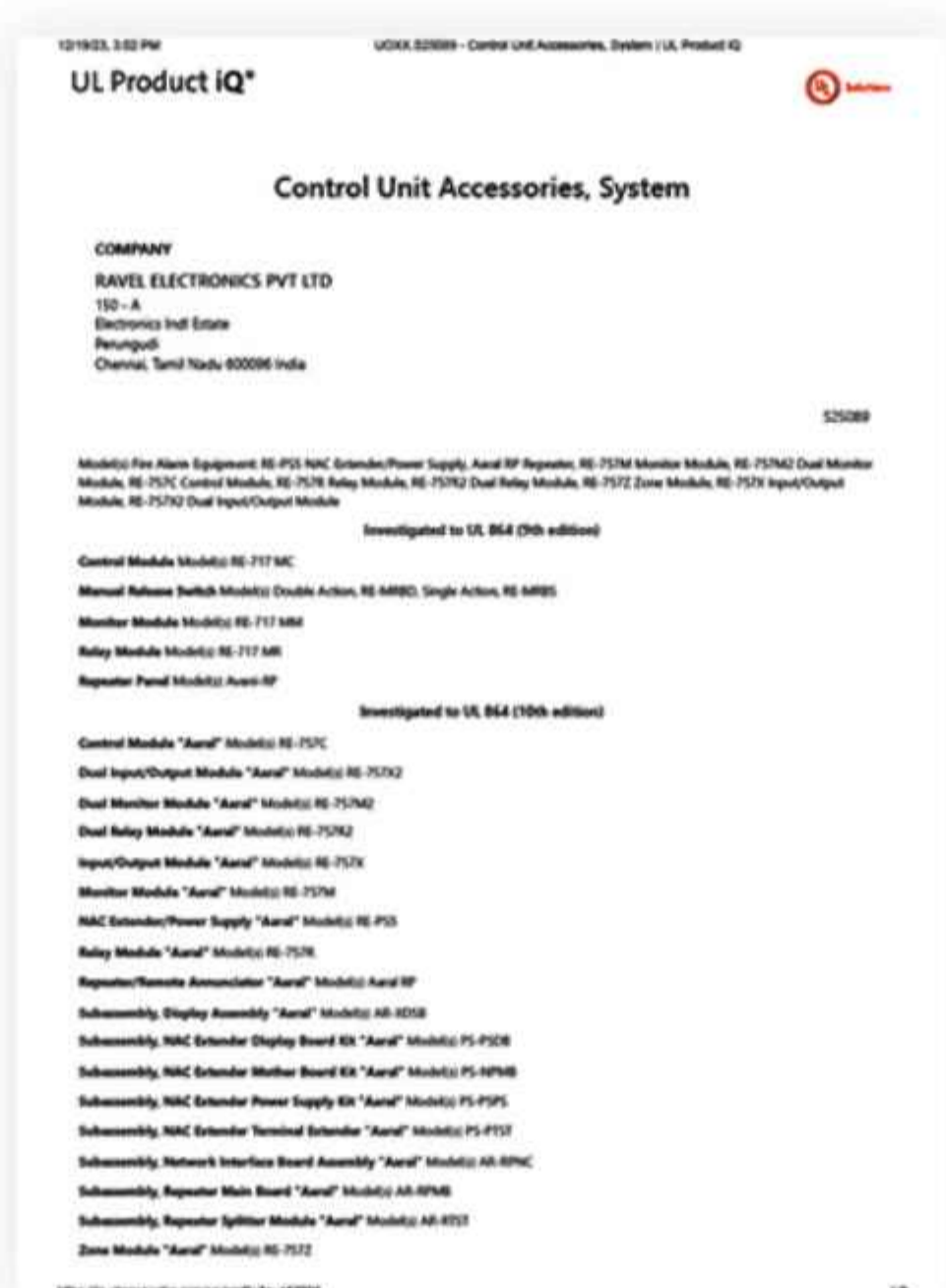
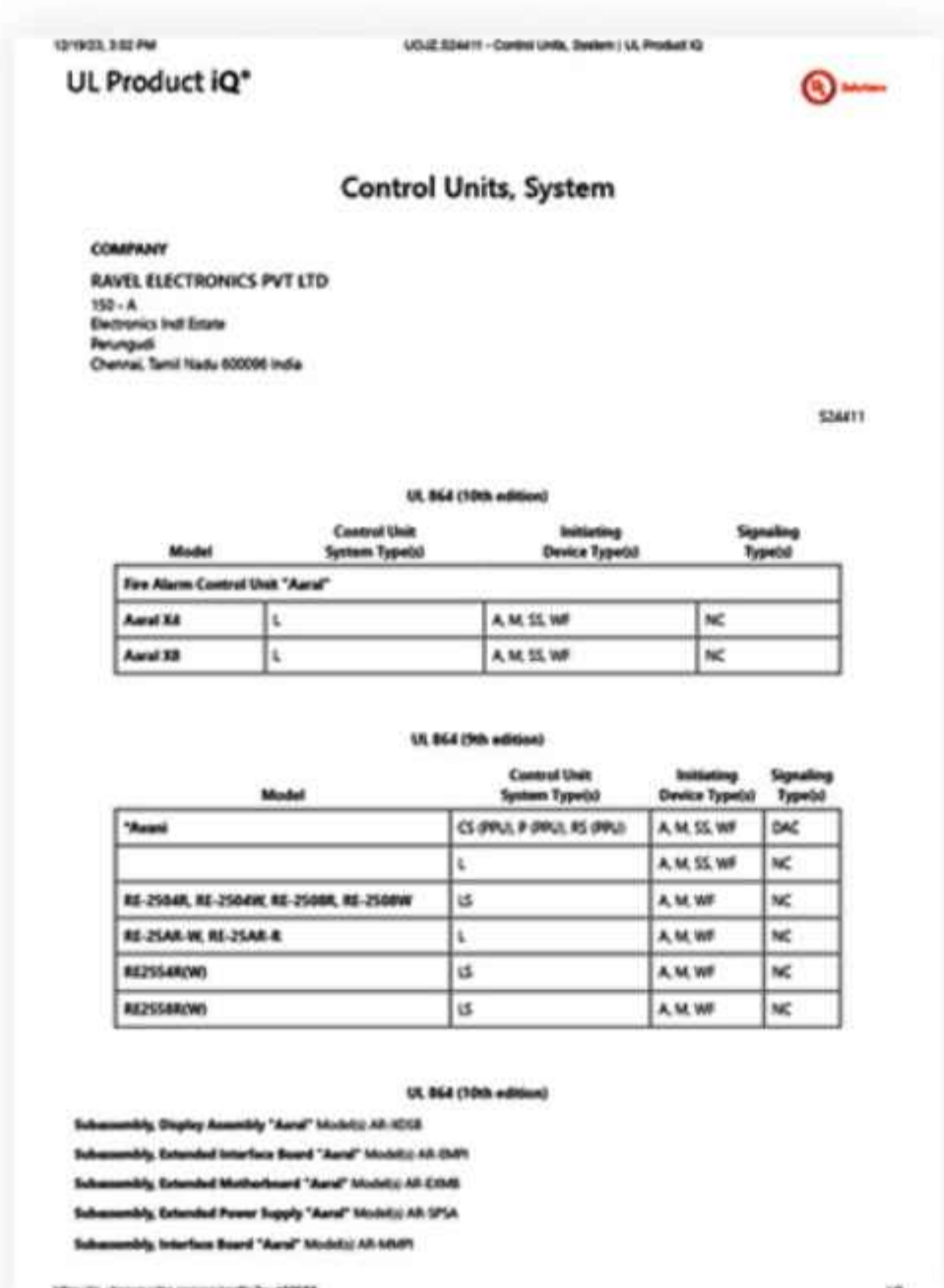


FEW OF OUR PRESTIGIOUS CUSTOMERS

10



UL CERTIFICATIONS



OUR PURSUIT

The Aim of the company is to serve the Fire detection industry with robust, trouble free and world-class Fire Alarm Panels and Devices. The cornerstone of the personnel plan is to set the policies, recruit the team and train them intensively and effectively to cascade the vision of the organization.

OUR REGIONAL OFFICES IN

RAVEL AMERICAS INC
U.S.A 

2855 NW 112th Ave Suite # 2 Miami,
Doral, FL 33172, United States

RAVEL ELECTRONICS PVT LTD
INDIA 


150-A, Electronics Industrial Estate,
Perungudi, Chennai - 600096. India

RAVEL DMCC
DUBAI-UAE 

Unit No:G30,DMCC Business centre,
Level No -13,AG Tower, Dubai, UAE

CHENNAI | MUMBAI | DELHI | BANGALORE

 sales@raveldmcc.com

 +971 56 484 4820
+971 55 656 9588

 www.raveldmcc.com
www.aaralfas.com

GET IN TOUCH!

Scan to Know More About Us

